

# Northern Ireland Construction Bulletin 1<sup>st</sup> January to 31<sup>st</sup> March 2008

*7<sup>th</sup> August 2008 (Revised 12<sup>th</sup> August 2008)*



Commerce, Energy and Industry

STATISTICAL BULLETIN

## Contents

|  | <b>Page</b> |
|--|-------------|
| <b>Introduction.....</b>   | <b>3</b>    |
| <b>Key Findings.....</b>   | <b>3</b>    |
| <b>Chapter 1 Output .....</b>  | <b>4</b>    |
| 1.1 Index of Construction.....   | 4           |
| 1.2 Index of New Work.....   | 5           |
| 1.3 Index of Repair & Maintenance.....   | 6           |
| 1.4 Index of Housing.....  | 7           |
| 1.5 Index of Infrastructure.....   | 8           |
| 1.6 Index of Other Work.....   | 9           |
| 1.7 Value of Construction Output.....  | 10          |
| 1.8(a) Output (Current Prices).....  | 12          |
| 1.8(b) Output (Constant Prices and Seasonally adjusted).....   | 13          |
| 1.9 Private Contractors: Value of Work Done By Stratum.....  | 14          |
| 1.10 Contractors Output (New Work only) by Type of Work.....   | 15          |
| 1.11 National Lottery Awards to Northern Ireland.....  | 16          |
| <b>Chapter 2 The Structure of the Industry.....</b>  | <b>17</b>   |
| 2.1 Structure of the Construction Industry.....  | 17          |
| 2.2 Northern Ireland Census of Employment.....   | 18          |
| 2.3 Northern Ireland Employee Jobs in Construction.....  | 19          |
| 2.4 Northern Ireland Labour Force Survey.....  | 20          |
| 2.5 Northern Ireland Annual Survey of Hours and Earnings<br>Earnings and Hours in the Construction Industry.....                                       | 21          |
| 2.6 Northern Ireland Annual Survey of Hours and Earnings<br>Earnings in the Construction Industry by Craft.....  | 22          |
| 2.7 Northern Ireland Annual Survey of Hours and Earnings<br>Earnings and Hours in the Construction Industry<br>and in all industries and Services..... | 22          |
| 2.8 Statistics of accidents reported to HSENI 1997/98-2007/08.....   | 23          |
| <b>Survey Response.....</b>  | <b>27</b>   |
| <b>Notes to Editors.....</b>   | <b>28</b>   |

# Northern Ireland Construction Bulletin

## 1<sup>st</sup> January to 31<sup>st</sup> March 2008

### Introduction

The Northern Ireland Construction Bulletin is produced by the Central Survey Unit of the Northern Ireland Statistics and Research Agency, on behalf of the Department of Finance and Personnel.

The Bulletin contains information on the value of Construction Output in Northern Ireland. These figures are derived from the Northern Ireland Quarterly Construction Enquiry (QCE). This is a statutory survey of construction firms operating in Northern Ireland. Each quarter a sample of construction firms are asked to provide details of the value of construction activity they have undertaken in a specified period. The QCE principally produces the Index of Construction, which is an estimate of the volume of construction output. It is an important economic indicator, which contributes to the calculation of UK GDP.

Additional information on the Northern Ireland Construction Industry is also contained in the Bulletin. This information is provided by the Statistics Research Branch of the Department of Enterprise, Trade and Investment and the Health and Safety Executive Northern Ireland (from a variety of survey sources).

### Key Findings

The key findings from the QCE covering the period 1<sup>st</sup> January – 31<sup>st</sup> March 2008 were as follows:

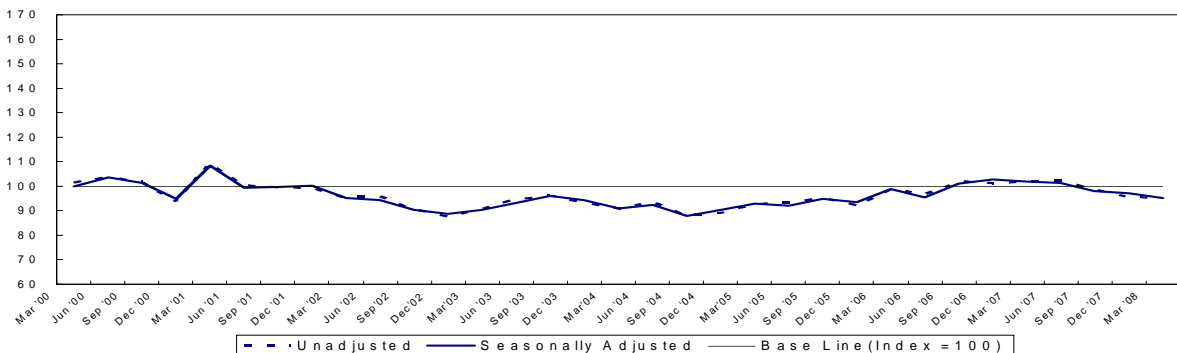
- The seasonally adjusted Index of Construction was 95.1, down 1.9 points on the previous quarter (97.0) and down 6.9 points on the corresponding quarter in 2007 (102.0) (Table 1.1)
- The estimated seasonally adjusted value of construction output (at 2000 prices) was £528 million, a decrease of 1.9% (£10 million) on the previous quarter (£538 million) and a decrease of 6.5% (£37 million) on the corresponding quarter in 2007 (£565 million) (Table 1.7)

# Chapter 1 Output

Figures are provisional and subject to revisions to take account of the most recent information and more up-to-date seasonal factors (see Notes to Editor)

| Table 1.1 Index of Construction |           |            | Index 2000=100      |  |
|---------------------------------|-----------|------------|---------------------|--|
| Year / Quarter                  |           | Unadjusted | Seasonally Adjusted |  |
| 2000                            | Jan - Mar | 101.2      | 99.8                |  |
|                                 | Apr - Jun | 103.6      | 103.6               |  |
|                                 | Jul - Sep | 101.5      | 101.5               |  |
|                                 | Oct - Dec | 93.6       | 94.9                |  |
| 2001                            | Jan - Mar | 109.2      | 108.5               |  |
|                                 | Apr - Jun | 100.4      | 99.4                |  |
|                                 | Jul - Sep | 99.4       | 99.6                |  |
|                                 | Oct - Dec | 99.0       | 100.3               |  |
| 2002                            | Jan - Mar | 95.3       | 95.2                |  |
|                                 | Apr - Jun | 95.7       | 94.4                |  |
|                                 | Jul - Sep | 90.4       | 90.5                |  |
|                                 | Oct - Dec | 87.5       | 88.6                |  |
| 2003                            | Jan - Mar | 90.3       | 90.4                |  |
|                                 | Apr - Jun | 94.7       | 93.3                |  |
|                                 | Jul - Sep | 96.0       | 96.0                |  |
|                                 | Oct - Dec | 93.1       | 94.4                |  |
| 2004                            | Jan - Mar | 90.6       | 90.8                |  |
|                                 | Apr - Jun | 93.6       | 92.3                |  |
|                                 | Jul - Sep | 88.2       | 87.9                |  |
|                                 | Oct - Dec | 89.1       | 90.4                |  |
| 2005                            | Jan - Mar | 92.7       | 92.9                |  |
|                                 | Apr - Jun | 93.2       | 92.0                |  |
|                                 | Jul - Sep | 95.2       | 94.8                |  |
|                                 | Oct - Dec | 92.1       | 93.5                |  |
| 2006                            | Jan - Mar | 98.9       | 98.9                |  |
|                                 | Apr - Jun | 96.5       | 95.6                |  |
|                                 | Jul - Sep | 101.8      | 101.2               |  |
|                                 | Oct - Dec | 101.1      | 102.7               |  |
| 2007                            | Jan - Mar | 102.0      | 102.0               |  |
|                                 | Apr - Jun | 102.1      | 101.3               |  |
|                                 | Jul - Sep | 98.6       | 97.9                |  |
|                                 | Oct - Dec | 95.5       | 97.0                |  |
| 2008                            | Jan - Mar | 95.3       | 95.1                |  |

**Figure 1.1 Index of Construction**  
 Quarters ending March 2000 to March 2008

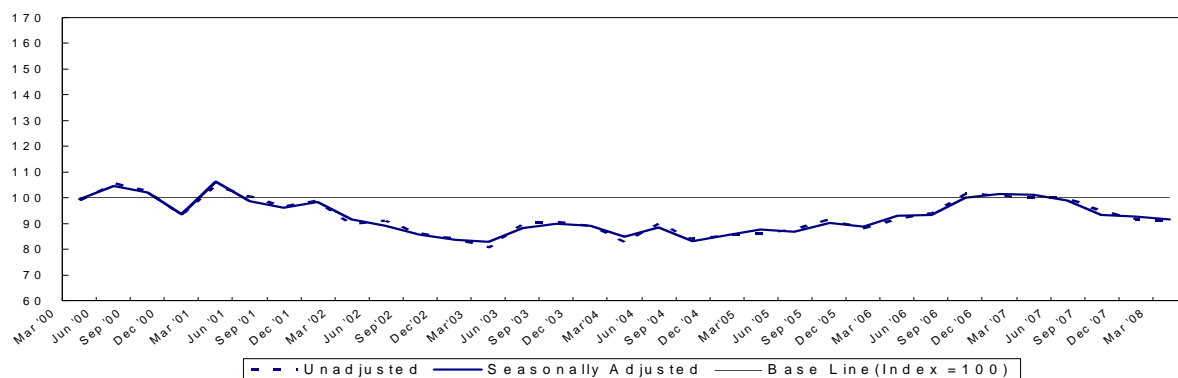


Figures are provisional and subject to revisions to take account of the most recent information and more up-to-date seasonal factors (see Notes to Editor)

| <b>Table 1.2 Index of New Work<sup>1</sup></b> |           |  | <b>Index 2000=100</b> |                            |
|--|-----------|--|-----------------------|----------------------------|
| <b>Year / Quarter</b>                          |           |  | <b>Unadjusted</b>     | <b>Seasonally Adjusted</b> |
| 2000   | Jan - Mar |  | 98.9                  | 99.4                       |
|  | Apr - Jun |  | 105.3                 | 104.5                      |
|  | Jul - Sep |  | 102.4                 | 102.1                      |
|  | Oct - Dec |  | 93.3                  | 93.4                       |
| 2001   | Jan - Mar |  | 104.6                 | 106.3                      |
|  | Apr - Jun |  | 100.3                 | 98.7                       |
|  | Jul - Sep |  | 96.3                  | 96.2                       |
|  | Oct - Dec |  | 98.5                  | 98.4                       |
| 2002   | Jan - Mar |  | 89.5                  | 91.6                       |
|  | Apr - Jun |  | 91.0                  | 89.2                       |
|  | Jul - Sep |  | 85.9                  | 85.7                       |
|  | Oct - Dec |  | 84.0                  | 83.8                       |
| 2003   | Jan - Mar |  | 80.7                  | 82.8                       |
|  | Apr - Jun |  | 89.8                  | 88.1                       |
|  | Jul - Sep |  | 90.5                  | 89.9                       |
|  | Oct - Dec |  | 89.0                  | 89.0                       |
| 2004   | Jan - Mar |  | 82.9                  | 84.9                       |
|  | Apr - Jun |  | 89.8                  | 88.5                       |
|  | Jul - Sep |  | 84.1                  | 83.2                       |
|  | Oct - Dec |  | 85.1                  | 85.5                       |
| 2005   | Jan - Mar |  | 86.1                  | 87.8                       |
|  | Apr - Jun |  | 87.7                  | 86.8                       |
|  | Jul - Sep |  | 91.4                  | 90.2                       |
|  | Oct - Dec |  | 88.0                  | 88.7                       |
| 2006   | Jan - Mar |  | 91.6                  | 92.9                       |
|  | Apr - Jun |  | 93.9                  | 93.3                       |
|  | Jul - Sep |  | 101.5                 | 100.0                      |
|  | Oct - Dec |  | 100.5                 | 101.6                      |
| 2007   | Jan - Mar |  | 100.1                 | 101.1                      |
|  | Apr - Jun |  | 99.4                  | 98.9                       |
|  | Jul - Sep |  | 94.7                  | 93.2                       |
|  | Oct - Dec |  | 91.6                  | 92.6                       |
| 2008   | Jan - Mar |  | 90.8                  | 91.6                       |

<sup>1</sup> New work relates to new construction including housing, factory and office extensions, major reconstruction, major alteration, site preparation and demolition

**Figure 1.2 Index of New Work**  
Quarters ending March 2000 to March 2008

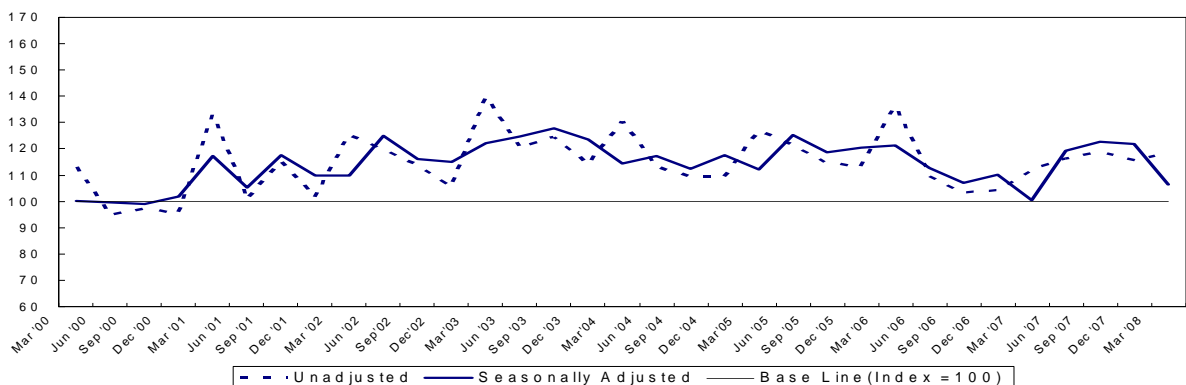


Figures are provisional and subject to revisions to take account of the most recent information and more up-to-date seasonal factors (see Notes to Editor)

| <b>Table 1.3 Index of Repair and Maintenance<sup>1</sup></b> |           |  | <b>Index 2000=100</b> |                            |
|--|-----------|--|-----------------------|----------------------------|
| <b>Year / Quarter</b>  |           |  | <b>Unadjusted</b>     | <b>Seasonally Adjusted</b> |
| 2000   | Jan - Mar |  | 112.9                 | 100.3                      |
|  | Apr - Jun |  | 94.8                  | 99.7                       |
|  | Jul - Sep |  | 97.1                  | 99.2                       |
|  | Oct - Dec |  | 95.4                  | 102.0                      |
| 2001   | Jan - Mar |  | 132.8                 | 117.2                      |
|  | Apr - Jun |  | 100.7                 | 105.4                      |
|  | Jul - Sep |  | 115.4                 | 117.7                      |
|  | Oct - Dec |  | 101.5                 | 109.8                      |
| 2002   | Jan - Mar |  | 125.1                 | 109.8                      |
|  | Apr - Jun |  | 119.9                 | 125.0                      |
|  | Jul - Sep |  | 113.5                 | 116.1                      |
|  | Oct - Dec |  | 105.7                 | 114.9                      |
| 2003   | Jan - Mar |  | 139.4                 | 122.1                      |
|  | Apr - Jun |  | 120.0                 | 124.8                      |
|  | Jul - Sep |  | 124.5                 | 127.8                      |
|  | Oct - Dec |  | 114.0                 | 123.7                      |
| 2004   | Jan - Mar |  | 130.5                 | 114.4                      |
|  | Apr - Jun |  | 113.1                 | 117.3                      |
|  | Jul - Sep |  | 109.3                 | 112.5                      |
|  | Oct - Dec |  | 109.2                 | 117.5                      |
| 2005   | Jan - Mar |  | 126.9                 | 112.1                      |
|  | Apr - Jun |  | 121.3                 | 125.2                      |
|  | Jul - Sep |  | 114.8                 | 118.7                      |
|  | Oct - Dec |  | 112.9                 | 120.4                      |
| 2006   | Jan - Mar |  | 136.1                 | 121.3                      |
|  | Apr - Jun |  | 109.5                 | 112.7                      |
|  | Jul - Sep |  | 103.4                 | 107.0                      |
|  | Oct - Dec |  | 104.0                 | 110.1                      |
| 2007   | Jan - Mar |  | 111.9                 | 100.4                      |
|  | Apr - Jun |  | 116.3                 | 119.3                      |
|  | Jul - Sep |  | 118.7                 | 122.8                      |
|  | Oct - Dec |  | 115.6                 | 121.9                      |
| 2008   | Jan - Mar |  | 118.1                 | 106.5                      |

<sup>1</sup> Repair & Maintenance includes all on-site work not defined as new construction.

**Figure 1.3 Index of Repair and Maintenance**  
Quarters ending March 2000 to March 2008

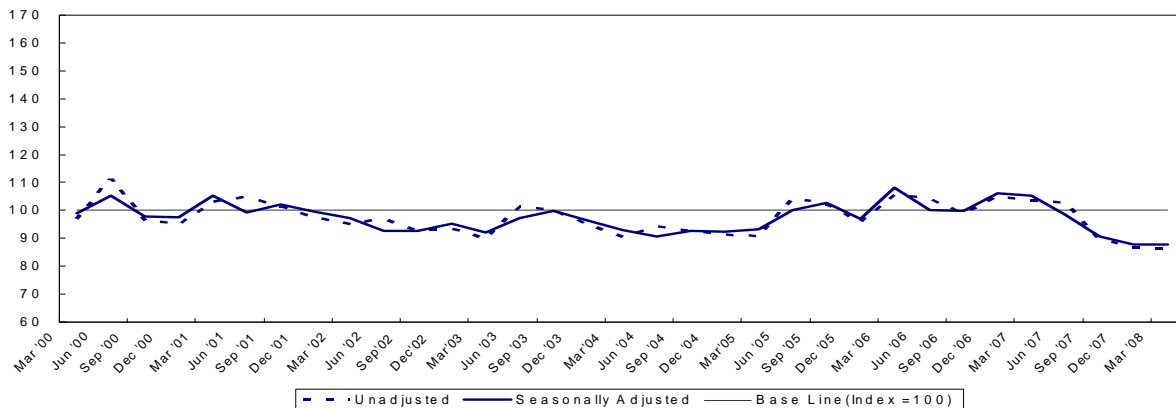


Figures are provisional and subject to revisions to take account of the most recent information and more up-to-date seasonal factors (see Notes to Editor)

| <b>Table 1.4 Index of Housing<sup>1</sup></b> |           |                   | <b>Index 2000=100</b>      |  |
|---|-----------|-------------------|----------------------------|--|
| <b>Year / Quarter</b>                         |           | <b>Unadjusted</b> | <b>Seasonally Adjusted</b> |  |
| 2000  | Jan - Mar | 97.1              | 99.0                       |  |
|   | Apr - Jun | 111.4             | 105.1                      |  |
|   | Jul - Sep | 96.5              | 97.7                       |  |
|   | Oct - Dec | 95.0              | 97.5                       |  |
| 2001  | Jan - Mar | 103.1             | 105.4                      |  |
|   | Apr - Jun | 104.7             | 99.2                       |  |
|   | Jul - Sep | 101.4             | 102.1                      |  |
|   | Oct - Dec | 97.3              | 99.5                       |  |
| 2002  | Jan - Mar | 95.0              | 97.3                       |  |
|   | Apr - Jun | 97.1              | 92.6                       |  |
|   | Jul - Sep | 92.6              | 92.8                       |  |
|   | Oct - Dec | 93.3              | 95.1                       |  |
| 2003  | Jan - Mar | 89.8              | 92.1                       |  |
|   | Apr - Jun | 101.3             | 97.1                       |  |
|   | Jul - Sep | 100.0             | 99.9                       |  |
|   | Oct - Dec | 94.9              | 96.3                       |  |
| 2004  | Jan - Mar | 90.3              | 92.9                       |  |
|   | Apr - Jun | 94.2              | 90.5                       |  |
|   | Jul - Sep | 92.8              | 92.8                       |  |
|   | Oct - Dec | 91.3              | 92.5                       |  |
| 2005  | Jan - Mar | 90.7              | 93.2                       |  |
|   | Apr - Jun | 104.3             | 100.2                      |  |
|   | Jul - Sep | 102.1             | 102.5                      |  |
|   | Oct - Dec | 95.9              | 97.0                       |  |
| 2006  | Jan - Mar | 105.6             | 108.1                      |  |
|   | Apr - Jun | 104.1             | 100.0                      |  |
|   | Jul - Sep | 98.9              | 99.8                       |  |
|   | Oct - Dec | 104.9             | 106.3                      |  |
| 2007  | Jan - Mar | 103.3             | 105.1                      |  |
|   | Apr - Jun | 102.6             | 98.5                       |  |
|   | Jul - Sep | 89.4              | 90.6                       |  |
|   | Oct - Dec | 86.7              | 87.8                       |  |
| 2008  | Jan - Mar | 86.4              | 87.7                       |  |

<sup>1</sup> Housing relates to all housing construction activity, both private and public sector.

**Figure 1.4 Index of Housing**  
Quarters Ending March 2000 to March 2008

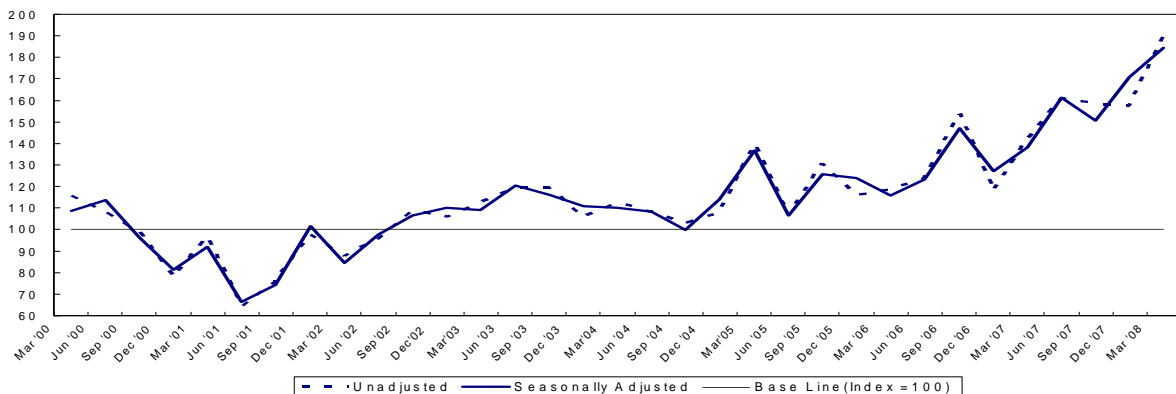


Figures are provisional and subject to revisions to take account of the most recent information and more up-to-date seasonal factors (see Notes to Editor)

| Table 1.5 Index of Infrastructure <sup>1</sup> |           |            | Index 2000=100      |  |
|--|-----------|------------|---------------------|--|
| Year / Quarter                                 |           | Unadjusted | Seasonally Adjusted |  |
| 2000   | Jan - Mar | 115.7      | 108.6               |  |
|  | Apr - Jun | 108.2      | 113.8               |  |
|  | Jul - Sep | 98.7       | 96.4                |  |
|  | Oct - Dec | 78.2       | 81.2                |  |
| 2001   | Jan - Mar | 96.7       | 92.1                |  |
|  | Apr - Jun | 64.2       | 66.3                |  |
|  | Jul - Sep | 75.8       | 74.2                |  |
|  | Oct - Dec | 97.7       | 101.6               |  |
| 2002   | Jan - Mar | 87.7       | 84.4                |  |
|  | Apr - Jun | 95.8       | 97.7                |  |
|  | Jul - Sep | 108.9      | 106.7               |  |
|  | Oct - Dec | 105.7      | 110.0               |  |
| 2003   | Jan - Mar | 112.4      | 109.2               |  |
|  | Apr - Jun | 119.2      | 120.5               |  |
|  | Jul - Sep | 119.3      | 116.3               |  |
|  | Oct - Dec | 105.9      | 110.9               |  |
| 2004   | Jan - Mar | 112.5      | 110.1               |  |
|  | Apr - Jun | 108.0      | 108.3               |  |
|  | Jul - Sep | 103.1      | 99.8                |  |
|  | Oct - Dec | 107.7      | 114.1               |  |
| 2005   | Jan - Mar | 139.5      | 136.8               |  |
|  | Apr - Jun | 106.6      | 106.4               |  |
|  | Jul - Sep | 130.8      | 125.6               |  |
|  | Oct - Dec | 115.6      | 124.1               |  |
| 2006   | Jan - Mar | 118.8      | 116.0               |  |
|  | Apr - Jun | 123.4      | 123.2               |  |
|  | Jul - Sep | 153.7      | 147.0               |  |
|  | Oct - Dec | 117.8      | 127.3               |  |
| 2007   | Jan - Mar | 142.1      | 138.2               |  |
|  | Apr - Jun | 161.0      | 161.4               |  |
|  | Jul - Sep | 158.6      | 150.7               |  |
|  | Oct - Dec | 157.4      | 171.0               |  |
| 2008   | Jan - Mar | 189.7      | 184.3               |  |

<sup>1</sup> Infrastructure includes work on roads and car parks, water and sewerage, electricity, gas, communication, air transport, railways, harbours and waterways

**Figure 1.5 Index of Infrastructure**  
Quarters Ending March 2000 to March 2008

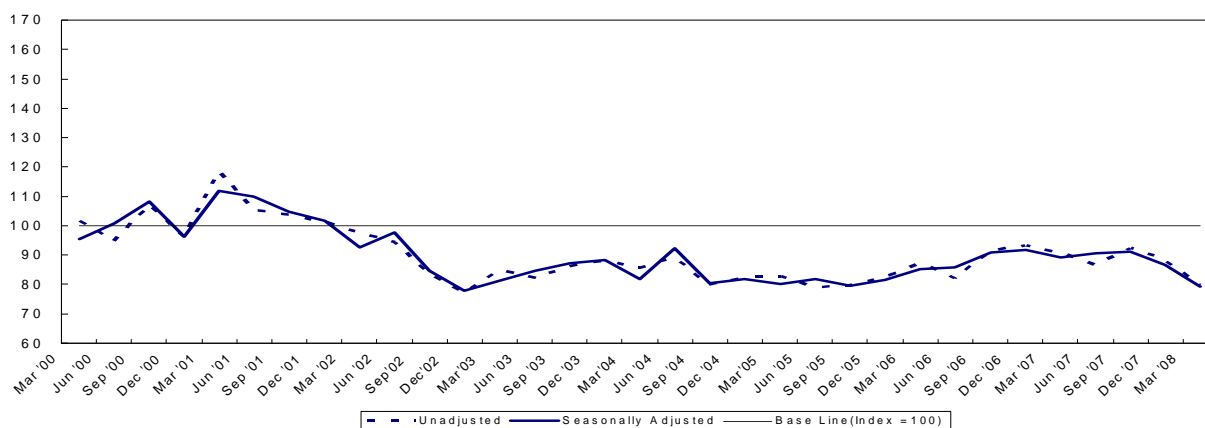


Figures are provisional and subject to revisions to take account of the most recent information and more up-to-date seasonal factors (see Notes to Editor)

| <b>Table 1.6 Index of Other Work<sup>1</sup></b> |           |                   | <b>Index 2000=100</b>      |  |
|--|-----------|-------------------|----------------------------|--|
| <b>Year / Quarter</b>                            |           | <b>Unadjusted</b> | <b>Seasonally Adjusted</b> |  |
| 2000   | Jan - Mar | 101.6             | 95.4                       |  |
|  | Apr - Jun | 94.9              | 100.7                      |  |
|  | Jul - Sep | 107.1             | 108.3                      |  |
|  | Oct - Dec | 96.2              | 96.2                       |  |
| 2001   | Jan - Mar | 118.3             | 111.8                      |  |
|  | Apr - Jun | 105.4             | 110.0                      |  |
|  | Jul - Sep | 103.6             | 104.9                      |  |
|  | Oct - Dec | 101.1             | 101.6                      |  |
| 2002   | Jan - Mar | 97.5              | 92.5                       |  |
|  | Apr - Jun | 94.4              | 97.6                       |  |
|  | Jul - Sep | 83.5              | 84.6                       |  |
|  | Oct - Dec | 77.3              | 77.8                       |  |
| 2003   | Jan - Mar | 85.1              | 81.2                       |  |
|  | Apr - Jun | 82.2              | 84.6                       |  |
|  | Jul - Sep | 86.2              | 87.3                       |  |
|  | Oct - Dec | 88.1              | 88.3                       |  |
| 2004   | Jan - Mar | 85.4              | 82.0                       |  |
|  | Apr - Jun | 89.3              | 92.3                       |  |
|  | Jul - Sep | 79.9              | 80.5                       |  |
|  | Oct - Dec | 82.1              | 81.8                       |  |
| 2005   | Jan - Mar | 82.7              | 80.1                       |  |
|  | Apr - Jun | 79.0              | 82.0                       |  |
|  | Jul - Sep | 79.6              | 79.6                       |  |
|  | Oct - Dec | 82.4              | 81.5                       |  |
| 2006   | Jan - Mar | 87.3              | 85.3                       |  |
|  | Apr - Jun | 82.2              | 85.7                       |  |
|  | Jul - Sep | 91.4              | 90.8                       |  |
|  | Oct - Dec | 93.2              | 91.7                       |  |
| 2007   | Jan - Mar | 90.7              | 89.3                       |  |
|  | Apr - Jun | 86.7              | 90.6                       |  |
|  | Jul - Sep | 92.2              | 91.1                       |  |
|  | Oct - Dec | 88.3              | 86.6                       |  |
| 2008   | Jan - Mar | 79.8              | 79.1                       |  |

<sup>1</sup>Other work includes factories, warehouse, oil, steel, gas and coal, school, colleges, offices, banks, shops, universities, entertainment, agriculture, health, welfare, garages and miscellaneous.

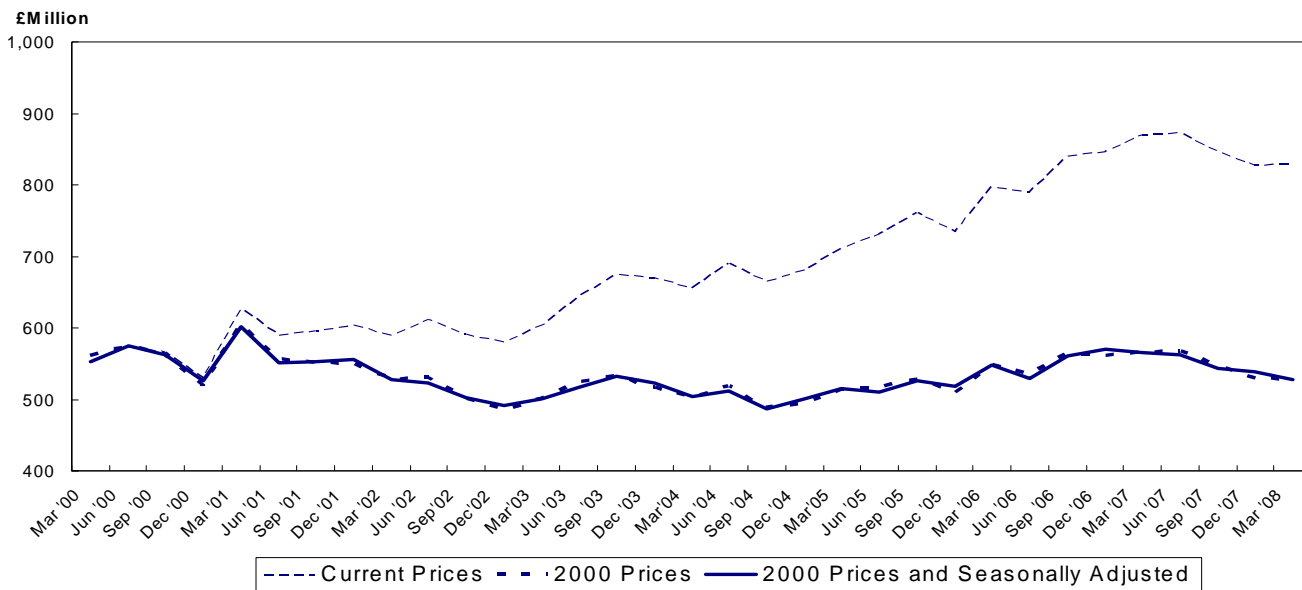
**Figure 1.6 Index of Other Work**  
Quarters Ending March 2000 to March 2008



Figures are provisional and subject to revisions to take account of the most recent information and more up-to-date seasonal factors (see Notes to Editor)

| <b>Table 1.7 Value of Construction Output</b> |                                       |                                    |  |
|---|---------------------------------------|------------------------------------|--|
| <b>Year / Quarter</b>                         | <b>Current prices<br/>(£ Million)</b> | <b>2000 prices<br/>(£ Million)</b> | <b>2000 prices and<br/>Seasonally Adjusted<br/>(£ Million)</b> |
| 2000 Jan - Mar                                | 551                                   | 561                                | 553  |
| Apr - Jun                                     | 572                                   | 574                                | 574  |
| Jul - Sep                                     | 565                                   | 563                                | 563  |
| Oct - Dec                                     | 529                                   | 519                                | 526  |
| <b>Total</b>                                  | <b>2,218</b>                          | <b>2,218</b>                       | <b>2,216</b>   |
| 2001 Jan - Mar                                | 626                                   | 605                                | 602  |
| Apr - Jun                                     | 590                                   | 556                                | 551  |
| Jul - Sep                                     | 595                                   | 551                                | 552  |
| Oct - Dec                                     | 604                                   | 549                                | 556  |
| <b>Total</b>                                  | <b>2,415</b>                          | <b>2,261</b>                       | <b>2,261</b>   |
| 2002 Jan - Mar                                | 589                                   | 528                                | 528  |
| Apr - Jun                                     | 611                                   | 531                                | 523  |
| Jul - Sep                                     | 590                                   | 501                                | 502  |
| Oct - Dec                                     | 580                                   | 485                                | 491  |
| <b>Total</b>                                  | <b>2,369</b>                          | <b>2,043</b>                       | <b>2,044</b>   |
| 2003 Jan - Mar                                | 603                                   | 500                                | 501  |
| Apr - Jun                                     | 643                                   | 525                                | 517  |
| Jul - Sep                                     | 673                                   | 532                                | 532  |
| Oct - Dec                                     | 669                                   | 516                                | 523  |
| <b>Total</b>                                  | <b>2,588</b>                          | <b>2,075</b>                       | <b>2,074</b>   |
| 2004 Jan - Mar                                | 655                                   | 503                                | 503  |
| Apr - Jun                                     | 690                                   | 519                                | 512  |
| Jul - Sep                                     | 665                                   | 489                                | 487  |
| Oct - Dec                                     | 681                                   | 494                                | 501  |
| <b>Total</b>                                  | <b>2,691</b>                          | <b>2,003</b>                       | <b>2,004</b>   |
| 2005 Jan - Mar                                | 710                                   | 514                                | 515  |
| Apr - Jun                                     | 731                                   | 516                                | 510  |
| Jul - Sep                                     | 761                                   | 528                                | 526  |
| Oct - Dec                                     | 734                                   | 510                                | 518  |
| <b>Total</b>                                  | <b>2,935</b>                          | <b>2,069</b>                       | <b>2,069</b>   |
| 2006 Jan - Mar                                | 797                                   | 548                                | 548  |
| Apr - Jun                                     | 789                                   | 535                                | 530  |
| Jul - Sep                                     | 840                                   | 564                                | 561  |
| Oct - Dec                                     | 845                                   | 561                                | 569  |
| <b>Total</b>                                  | <b>3,271</b>                          | <b>2,208</b>                       | <b>2,208</b>   |
| 2007 Jan - Mar                                | 870                                   | 566                                | 565  |
| Apr - Jun                                     | 872                                   | 566                                | 562  |
| Jul - Sep                                     | 846                                   | 547                                | 543  |
| Oct - Dec                                     | 827                                   | 530                                | 538  |
| <b>Total</b>                                  | <b>3,415</b>                          | <b>2,230</b>                       | <b>2,230</b>   |
| 2008 Jan - Mar                                | 829                                   | 528                                | 528  |

**Figure 1.7 Value of Construction Output**  
 Quarters Ending March 2000 to March 2008



Figures are provisional and subject to revisions to take account of the most recent information and more up-to-date seasonal factors (see Notes to Editor)

| <b>Table 1.8 (a) Output<sup>1</sup></b> |                    |                |                                   |  |                               |                               |                         |                               |                |                              |               |                |   |                 |
|---|--------------------|----------------|-----------------------------------|--|-------------------------------|-------------------------------|-------------------------|-------------------------------|----------------|------------------------------|---------------|----------------|---|-----------------|
| <b>Current Prices (£ million)</b>       |                    |                |                                   |  |                               |                               |                         |                               |                |                              |               |                |   |                 |
| <b>YEAR/<br/>QUARTER</b>                | <b>New housing</b> |                | <b>Other New Work non-housing</b> |  |                               |                               | <b>All New<br/>Work</b> | <b>Repair and Maintenance</b> |                |                              |               |                |   | <b>All Work</b> |
|   | <b>Public</b>      | <b>Private</b> | <b>Infra -<br/>structure</b>      | <b>Other New Work exc<br/>infrastructure</b> |                               |                               |                         | <b>Housing</b>                |                | <b>Other Work</b>            |               |                | <b>All Repair &amp;<br/>maintenance</b> |                 |
|   |                    |                |                                   | <b>Public</b>                                | <b>Private<br/>Industrial</b> | <b>Private<br/>Commercial</b> |                         | <b>Public</b>                 | <b>Private</b> | <b>Infra -<br/>structure</b> | <b>Public</b> | <b>Private</b> |   |                 |
| 2000 Jan - Mar                          | 24.2               | 162.8          | 56.0                              | 90.7   | 22.9                          | 94.4                          | 451.1                   | 23.8                          | 19.6           | 15.8                         | 31.0          | 9.6            | 99.8                                    | 550.9           |
| Apr - Jun                               | 22.4               | 205.8          | 54.5                              | 93.5   | 27.3                          | 84.5                          | 488.1                   | 21.0                          | 20.9           | 13.9                         | 17.4          | 11.2           | 84.4                                    | 572.5           |
| Jul - Sep                               | 20.4               | 172.8          | 53.2                              | 114.0  | 20.3                          | 96.0                          | 476.7                   | 18.6                          | 20.4           | 9.8                          | 25.2          | 14.7           | 88.6                                    | 565.4           |
| Oct - Dec                               | 20.4               | 181.3          | 33.0                              | 91.2   | 18.8                          | 96.7                          | 441.4                   | 16.6                          | 14.1           | 17.4                         | 22.4          | 17.0           | 87.5                                    | 528.9           |
| 2001 Jan - Mar                          | 26.4               | 190.3          | 44.4                              | 114.5  | 21.1                          | 107.7                         | 504.3                   | 23.3                          | 19.0           | 18.3                         | 34.9          | 26.7           | 122.1                                   | 626.4           |
| Apr - Jun                               | 30.2               | 199.6          | 31.9                              | 120.4  | 18.6                          | 96.0                          | 496.8                   | 21.5                          | 18.8           | 9.3                          | 18.7          | 24.4           | 92.8                                    | 589.6           |
| Jul - Sep                               | 25.7               | 196.4          | 33.5                              | 119.2  | 12.0                          | 99.4                          | 486.3                   | 24.9                          | 18.6           | 16.6                         | 25.3          | 23.8           | 109.2                                   | 595.4           |
| Oct - Dec                               | 29.4               | 195.8          | 48.3                              | 102.2  | 19.2                          | 112.7                         | 507.6                   | 18.5                          | 17.7           | 17.8                         | 26.9          | 15.1           | 96.0                                    | 603.7           |
| 2002 Jan - Mar                          | 32.8               | 173.5          | 43.7                              | 91.3   | 23.3                          | 105.3                         | 469.9                   | 33.4                          | 17.6           | 16.2                         | 35.4          | 16.1           | 118.7                                   | 588.5           |
| Apr - Jun                               | 36.7               | 188.4          | 46.7                              | 93.1   | 22.3                          | 108.5                         | 495.7                   | 34.9                          | 17.2           | 19.3                         | 25.2          | 18.5           | 115.2                                   | 610.9           |
| Jul - Sep                               | 29.8               | 197.6          | 51.0                              | 88.7   | 20.8                          | 88.5                          | 476.3                   | 30.3                          | 14.7           | 24.8                         | 21.9          | 22.1           | 113.8                                   | 590.1           |
| Oct - Dec                               | 32.3               | 196.7          | 49.1                              | 73.9   | 32.8                          | 88.4                          | 473.2                   | 31.3                          | 17.3           | 24.1                         | 20.6          | 13.1           | 106.4                                   | 579.7           |
| 2003 Jan - Mar                          | 27.4               | 184.1          | 54.7                              | 96.9   | 19.6                          | 79.6                          | 462.2                   | 35.0                          | 24.2           | 24.8                         | 39.9          | 16.9           | 140.8                                   | 603.1           |
| Apr - Jun                               | 27.8               | 229.3          | 59.6                              | 82.6   | 32.7                          | 88.3                          | 520.3                   | 32.5                          | 22.7           | 24.6                         | 25.4          | 17.2           | 122.4                                   | 642.6           |
| Jul - Sep                               | 27.7               | 247.0          | 59.2                              | 97.3   | 17.6                          | 94.3                          | 543.0                   | 26.6                          | 28.0           | 24.0                         | 31.4          | 20.4           | 130.4                                   | 673.4           |
| Oct - Dec                               | 30.3               | 240.8          | 52.1                              | 110.1  | 22.3                          | 93.3                          | 549.0                   | 29.4                          | 21.6           | 22.8                         | 27.4          | 18.9           | 120.2                                   | 669.2           |
| 2004 Jan - Mar                          | 25.3               | 230.6          | 48.7                              | 100.6  | 19.4                          | 92.7                          | 517.4                   | 29.3                          | 24.8           | 31.6                         | 36.9          | 15.5           | 138.1                                   | 655.4           |
| Apr - Jun                               | 26.5               | 252.2          | 50.7                              | 100.2  | 22.6                          | 117.0                         | 569.1                   | 32.4                          | 19.9           | 26.6                         | 23.7          | 18.2           | 120.8                                   | 689.9           |
| Jul - Sep                               | 29.7               | 249.4          | 50.2                              | 93.7   | 19.9                          | 100.2                         | 543.0                   | 30.5                          | 22.0           | 24.8                         | 26.6          | 17.7           | 121.5                                   | 664.5           |
| Oct - Dec                               | 28.9               | 252.1          | 60.6                              | 101.0  | 17.4                          | 99.1                          | 559.0                   | 32.1                          | 19.7           | 19.9                         | 31.8          | 18.2           | 121.7                                   | 680.7           |
| 2005 Jan - Mar                          | 34.0               | 247.8          | 78.4                              | 109.1  | 18.7                          | 79.5                          | 567.5                   | 36.9                          | 15.2           | 27.3                         | 43.3          | 19.8           | 142.5                                   | 710.0           |
| Apr - Jun                               | 35.8               | 292.4          | 57.6                              | 96.6   | 19.2                          | 92.3                          | 593.9                   | 35.7                          | 23.7           | 25.1                         | 30.4          | 21.9           | 136.8                                   | 730.7           |
| Jul - Sep                               | 38.9               | 298.8          | 74.0                              | 105.5  | 11.2                          | 97.2                          | 625.6                   | 26.5                          | 23.9           | 30.5                         | 27.5          | 26.7           | 135.1                                   | 760.7           |
| Oct - Dec                               | 51.2               | 259.6          | 69.1                              | 88.2   | 15.8                          | 116.7                         | 600.6                   | 28.7                          | 23.9           | 25.1                         | 27.7          | 28.0           | 133.3                                   | 733.9           |
| 2006 Jan - Mar                          | 47.3               | 292.2          | 73.3                              | 90.6   | 16.8                          | 114.7                         | 634.7                   | 32.1                          | 34.5           | 24.0                         | 39.5          | 31.9           | 162.1                                   | 796.8           |
| Apr - Jun                               | 50.6               | 295.2          | 82.9                              | 85.1   | 15.1                          | 128.1                         | 656.9                   | 33.6                          | 26.0           | 21.5                         | 26.0          | 24.7           | 131.8                                   | 788.8           |
| Jul - Sep                               | 46.6               | 292.8          | 113.3                             | 97.4   | 23.6                          | 137.9                         | 711.6                   | 21.2                          | 31.0           | 19.4                         | 33.6          | 23.1           | 128.3                                   | 839.9           |
| Oct - Dec                               | 58.6               | 306.1          | 82.8                              | 106.5  | 28.3                          | 132.7                         | 715.0                   | 27.6                          | 26.9           | 18.9                         | 21.1          | 35.9           | 130.5                                   | 845.5           |
| 2007 Jan - Mar                          | 45.1               | 315.7          | 97.5                              | 122.2  | 20.2                          | 127.9                         | 728.5                   | 25.6                          | 34.8           | 29.4                         | 32.6          | 19.0           | 141.5                                   | 870.0           |
| Apr - Jun                               | 42.6               | 310.8          | 111.8                             | 105.3  | 15.3                          | 138.2                         | 724.0                   | 32.5                          | 34.5           | 29.3                         | 23.4          | 28.5           | 148.1                                   | 872.2           |
| Jul - Sep                               | 35.8               | 277.9          | 108.2                             | 104.2  | 23.7                          | 140.2                         | 689.9                   | 28.2                          | 29.6           | 31.6                         | 41.3          | 25.1           | 155.7                                   | 845.6           |
| Oct - Dec                               | 32.1               | 271.5          | 121.0                             | 101.4  | 17.7                          | 132.2                         | 675.9                   | 35.1                          | 23.7           | 19.8                         | 35.7          | 37.3           | 151.6                                   | 827.5           |
| 2008 Jan - Mar                          | 34.6               | 257.6          | 138.6                             | 97.5   | 16.6                          | 128.8                         | 673.6                   | 28.6                          | 40.8           | 33.5                         | 19.9          | 32.6           | 155.4                                   | 829.0           |

<sup>1</sup> Includes output by contractors and public sector direct labour departments

Figures are provisional and subject to revisions to take account of the most recent information and more up-to-date seasonal factors (see Notes to Editor)

| <b>Table 1.8 (b) Output<sup>1</sup></b>                           |                    |                |  |               |                               |                               |   |                               |                |                              |               |                |   |                                 |
|---|--------------------|----------------|--|---------------|-------------------------------|-------------------------------|---|-------------------------------|----------------|------------------------------|---------------|----------------|---|---------------------------------|
| <b>Constant (2000) Prices and Seasonally Adjusted (£ million)</b> |                    |                |  |               |                               |                               |   |                               |                |                              |               |                |   |                                 |
| <b>YEAR/<br/>QUARTER</b>  | <b>New housing</b> |                | <b>Other New Work non-housing</b>            |               |                               |                               | <b>All<br/>New<br/>Work<sup>2</sup></b> | <b>Repair and Maintenance</b> |                |                              |               |                | <b>All Repair<br/>&amp; Maintenance<sup>2</sup></b> | <b>All<br/>Work<sup>2</sup></b> |
|   |                    |                | <b>Other New Work exc<br/>infrastructure</b> |               |                               | <b>Housing</b>                |   | <b>Other Work</b>             |                |                              |               |                |   |                                 |
|   | <b>Public</b>      | <b>Private</b> | <b>Infra -<br/>structure</b>                 | <b>Public</b> | <b>Private<br/>Industrial</b> | <b>Private<br/>Commercial</b> |   | <b>Public</b>                 | <b>Private</b> | <b>Infra -<br/>structure</b> | <b>Public</b> | <b>Private</b> |   |                                 |
| 2000 Jan - Mar  | 22.8               | 172.2          | 57.3   | 94.0          | 20.7                          | 96.2                          | 461.6                                   | 22.8                          | 19.5           | 13.7                         | 23.9          | 10.0           | 90.3  | 553.5                           |
| Apr - Jun   | 21.7               | 195.8          | 54.5   | 95.2          | 26.7                          | 90.8                          | 485.3                                   | 20.7                          | 20.2           | 15.5                         | 22.3          | 11.2           | 89.8  | 574.2                           |
| Jul - Sep   | 22.0               | 171.2          | 53.0   | 112.3         | 23.8                          | 94.2                          | 474.2                                   | 19.1                          | 20.4           | 10.2                         | 26.0          | 14.0           | 89.3  | 562.7                           |
| Oct - Dec   | 20.6               | 181.5          | 32.5   | 87.7          | 18.2                          | 91.1                          | 433.8                                   | 17.3                          | 14.9           | 17.2                         | 24.2          | 17.2           | 91.9  | 526.0                           |
| 2001 Jan - Mar  | 24.3               | 190.0          | 43.4   | 109.2         | 20.5                          | 104.7                         | 493.5                                   | 21.2                          | 17.7           | 16.0                         | 25.4          | 26.8           | 105.6   | 601.6                           |
| Apr - Jun   | 27.3               | 177.6          | 31.6   | 111.3         | 18.7                          | 94.0                          | 458.1                                   | 20.3                          | 17.8           | 9.8                          | 23.1          | 23.5           | 95.0  | 551.3                           |
| Jul - Sep   | 26.0               | 175.5          | 32.4   | 107.7         | 14.9                          | 90.7                          | 446.8                                   | 25.2                          | 17.8           | 16.3                         | 25.3          | 21.5           | 106.0   | 552.0                           |
| Oct - Dec   | 27.0               | 175.4          | 45.1   | 91.6          | 17.6                          | 98.8                          | 457.0                                   | 18.8                          | 18.4           | 17.1                         | 28.7          | 15.1           | 98.9  | 556.1                           |
| 2002 Jan - Mar  | 28.1               | 159.2          | 40.3   | 81.3          | 19.6                          | 94.0                          | 425.4                                   | 29.3                          | 15.6           | 14.1                         | 24.6          | 15.6           | 98.9  | 527.7                           |
| Apr - Jun   | 30.4               | 148.3          | 42.7   | 82.8          | 18.2                          | 94.5                          | 414.0                                   | 31.1                          | 15.9           | 19.0                         | 29.6          | 17.3           | 112.6   | 523.3                           |
| Jul - Sep   | 27.6               | 154.0          | 47.0   | 77.8          | 20.8                          | 73.5                          | 398.1                                   | 29.6                          | 13.3           | 22.4                         | 20.9          | 18.7           | 104.5   | 501.8                           |
| Oct - Dec   | 27.0               | 155.3          | 45.6   | 63.0          | 25.1                          | 70.9                          | 389.1                                   | 29.8                          | 17.0           | 22.2                         | 20.6          | 12.5           | 103.5   | 491.4                           |
| 2003 Jan - Mar  | 22.7               | 147.9          | 49.3   | 80.2          | 15.3                          | 67.5                          | 384.5                                   | 28.9                          | 19.9           | 20.4                         | 26.2          | 15.2           | 110.0   | 501.1                           |
| Apr - Jun   | 21.9               | 167.0          | 54.0   | 67.9          | 26.1                          | 72.6                          | 409.2                                   | 26.9                          | 20.2           | 22.4                         | 27.7          | 15.3           | 112.4   | 517.2                           |
| Jul - Sep   | 23.6               | 168.4          | 55.2   | 80.1          | 17.8                          | 75.2                          | 417.6                                   | 25.4                          | 24.1           | 20.3                         | 28.8          | 16.7           | 115.1   | 532.2                           |
| Oct - Dec   | 22.6               | 162.8          | 47.8   | 88.7          | 17.6                          | 70.5                          | 413.3                                   | 26.5                          | 20.5           | 20.7                         | 25.7          | 17.1           | 111.4   | 523.1                           |
| 2004 Jan - Mar  | 19.5               | 160.3          | 44.6   | 80.0          | 16.1                          | 75.1                          | 394.3                                   | 23.4                          | 19.1           | 24.6                         | 23.5          | 13.2           | 103.1   | 503.4                           |
| Apr - Jun   | 19.6               | 157.3          | 46.2   | 77.6          | 18.9                          | 90.2                          | 410.8                                   | 25.1                          | 17.2           | 22.8                         | 24.8          | 15.4           | 105.6   | 511.8                           |
| Jul - Sep   | 23.6               | 155.9          | 45.6   | 70.7          | 19.1                          | 75.4                          | 386.2                                   | 28.0                          | 17.7           | 19.5                         | 22.6          | 14.1           | 101.4   | 487.3                           |
| Oct - Dec   | 19.9               | 158.5          | 52.5   | 74.8          | 13.5                          | 73.5                          | 396.9                                   | 26.8                          | 17.9           | 17.5                         | 27.8          | 15.0           | 105.9   | 501.1                           |
| 2005 Jan - Mar  | 24.2               | 160.6          | 66.9   | 79.8          | 15.4                          | 63.4                          | 407.5                                   | 28.4                          | 10.9           | 19.7                         | 26.8          | 15.8           | 101.0   | 514.9                           |
| Apr - Jun   | 24.1               | 173.0          | 47.8   | 69.4          | 16.2                          | 69.1                          | 402.9                                   | 25.9                          | 19.6           | 20.2                         | 30.3          | 17.5           | 112.8   | 510.2                           |
| Jul - Sep   | 28.0               | 178.5          | 59.9   | 74.9          | 10.2                          | 71.5                          | 418.9                                   | 23.2                          | 18.4           | 22.6                         | 21.4          | 21.0           | 107.0   | 525.7                           |
| Oct - Dec   | 32.1               | 158.4          | 54.5   | 63.3          | 12.1                          | 85.4                          | 411.8                                   | 22.3                          | 20.7           | 21.5                         | 22.4          | 21.1           | 108.4   | 518.4                           |
| 2006 Jan - Mar  | 31.7               | 180.3          | 57.5   | 65.5          | 13.6                          | 89.1                          | 431.5                                   | 23.8                          | 23.0           | 15.9                         | 23.8          | 23.9           | 109.3   | 548.2                           |
| Apr - Jun   | 33.3               | 166.4          | 62.5   | 60.4          | 12.7                          | 93.5                          | 433.2                                   | 22.6                          | 20.0           | 16.1                         | 24.6          | 18.7           | 101.5   | 529.8                           |
| Jul - Sep   | 31.7               | 168.8          | 83.7   | 67.1          | 20.5                          | 98.2                          | 464.2                                   | 17.7                          | 22.7           | 13.5                         | 23.9          | 17.6           | 96.4  | 560.9                           |
| Oct - Dec   | 35.0               | 178.5          | 61.3   | 72.6          | 21.1                          | 95.4                          | 471.5                                   | 19.9                          | 22.0           | 15.5                         | 15.7          | 24.9           | 99.2  | 569.5                           |
| 2007 Jan - Mar  | 27.9               | 185.0          | 69.4   | 81.4          | 16.0                          | 96.5                          | 469.6                                   | 18.1                          | 21.7           | 18.4                         | 19.2          | 13.3           | 90.5  | 565.3                           |
| Apr - Jun   | 25.7               | 167.7          | 81.6   | 67.9          | 12.8                          | 98.7                          | 459.3                                   | 20.5                          | 24.8           | 20.9                         | 21.0          | 20.5           | 107.5   | 561.7                           |
| Jul - Sep   | 22.5               | 153.7          | 79.1   | 65.7          | 19.7                          | 97.2                          | 432.8                                   | 22.3                          | 20.7           | 21.0                         | 26.9          | 18.4           | 110.6   | 542.6                           |
| Oct - Dec   | 18.0               | 151.2          | 86.2   | 62.6          | 12.8                          | 93.3                          | 430.0                                   | 24.0                          | 18.4           | 15.9                         | 25.1          | 24.4           | 109.8   | 537.9                           |
| 2008 Jan - Mar  | 20.2               | 145.5          | 97.6   | 59.7          | 12.9                          | 95.0                          | 425.4                                   | 19.7                          | 24.5           | 20.0                         | 11.6          | 21.7           | 96.0  | 527.5                           |

<sup>1</sup> Includes output by contractors and public sector direct labour departments

<sup>2</sup> See notes to Editor (Paragraph 7)

Figures are provisional and subject to revisions to take account of the most recent information and more up-to-date seasonal factors (see Notes to Editor)

| <b>Table 1.9 Output<sup>1</sup> (Private Contractors only) by Stratum<sup>2</sup> of Firm</b> |                                |                    |                |                                   |  |                           |                           |                     |                               |                |                        |               |                |                                     |                 |
|---|--------------------------------|--------------------|----------------|-----------------------------------|--|---------------------------|---------------------------|---------------------|-------------------------------|----------------|------------------------|---------------|----------------|-------------------------------------|-----------------|
| <b>Current Prices (£million)</b>  |                                |                    |                |                                   |  |                           |                           |                     |                               |                |                        |               |                |                                     |                 |
| <b>1st Quarter 2008</b>   |                                |                    |                |                                   |  |                           |                           |                     |                               |                |                        |               |                |                                     |                 |
| <b>Stratum of Firm</b>  | <b>Annual Turnover (£'000)</b> | <b>New housing</b> |                | <b>Other New Work non-housing</b> |  |                           |                           | <b>All New Work</b> | <b>Repair and Maintenance</b> |                |                        |               |                |                                     | <b>All Work</b> |
|   |                                | <b>Public</b>      | <b>Private</b> | <b>Infra - structure</b>          | <b>Other New Work exc infrastructure</b> |                           |                           |                     | <b>Housing</b>                |                | <b>Other Work</b>      |               |                | <b>All Repair &amp; maintenance</b> |                 |
|   |                                |                    |                |                                   | <b>Public</b>                            | <b>Private Industrial</b> | <b>Private Commercial</b> |                     | <b>Public</b>                 | <b>Private</b> | <b>Infra-structure</b> | <b>Public</b> | <b>Private</b> |                                     |                 |
| 1   | 0-124                          | 0.0                | 5.1            | 0.0                               | 0.0                                      | 0.0                       | 1.2                       | 6.3                 | 2.6                           | 15.4           | 0.0                    | 0.0           | 1.2            | 19.1                                | 25.4            |
| 2   | 125-549                        | 1.9                | 41.3           | 3.2                               | 2.2                                      | 0.0                       | 9.4                       | 58.0                | 2.1                           | 12.0           | 2.4                    | 6.1           | 8.4            | 31.1                                | 89.1            |
| 3   | 550-2,099                      | 6.0                | 71.5           | 9.6                               | 13.0                                     | 4.1                       | 15.0                      | 119.2               | 9.2                           | 8.8            | 5.2                    | 3.9           | 10.9           | 38.1                                | 157.3           |
| 4   | 2,100-5,249                    | 8.2                | 47.1           | 2.6                               | 14.7                                     | 4.9                       | 17.6                      | 95.0                | 11.4                          | 2.3            | 0.2                    | 2.3           | 6.7            | 22.9                                | 117.9           |
| 5   | 5,250-10,499                   | 8.1                | 25.4           | 7.3                               | 12.8                                     | 1.0                       | 15.6                      | 70.2                | 0.7                           | 0.0            | 5.5                    | 1.4           | 3.1            | 10.8                                | 81.0            |
| 6   | 10,500+                        | 10.4               | 67.1           | 115.8                             | 54.8                                     | 6.6                       | 70.1                      | 324.8               | 1.6                           | 2.2            | 6.4                    | 2.0           | 2.2            | 14.5                                | 339.3           |
| <b>Total</b>  |                                | <b>34.6</b>        | <b>257.6</b>   | <b>138.5</b>                      | <b>97.5</b>                              | <b>16.6</b>               | <b>128.8</b>              | <b>673.5</b>        | <b>27.6</b>                   | <b>40.8</b>    | <b>19.7</b>            | <b>15.8</b>   | <b>32.6</b>    | <b>136.5</b>                        | <b>810.0</b>    |

<sup>1</sup>Includes output by Contractors only

<sup>2</sup> Firms are stratified by turnover

Figures are provisional and subject to revisions to take account of the most recent information and more up-to-date seasonal factors (see Notes to Editor)

| <b>Table 1.10 Contractors Output<sup>1</sup> (New Work Only) by Type of Work</b> |                |                          |                  |                    |                              |                               |                      |               |                |                       |                |              |                     |                       |                                      |
|--|----------------|--------------------------|------------------|--------------------|------------------------------|-------------------------------|----------------------|---------------|----------------|-----------------------|----------------|--------------|---------------------|-----------------------|--------------------------------------|
| <b>Current Prices (£ million)</b>  |                |                          |                  |                    |                              |                               |                      |               |                |                       |                |              |                     |                       |                                      |
| <b>a) New Work for Public Sector</b>   |                |                          |                  |                    |                              |                               |                      |               |                |                       |                |              |                     |                       |                                      |
| <b>Year</b>  | <b>Housing</b> | <b>Infra - structure</b> | <b>Factories</b> | <b>Ware-houses</b> | <b>Oil, steel &amp; coal</b> | <b>Schools &amp; Colleges</b> | <b>Uni-versities</b> | <b>Health</b> | <b>Offices</b> | <b>Enter-tainment</b> | <b>Garages</b> | <b>Shops</b> | <b>Agri-culture</b> | <b>Miscell-aneous</b> | <b>All public sector</b>             |
| 2000   | 87.4           | 137.5                    | 5.0              | 3.3                | 0.0                          | 80.1                          | 11.8                 | 68.1          | 30.6           | 88.8                  | 0.0            | 0.0          | 0.5                 | 63.6                  | 576.6                                |
| 2001   | 111.8          | 111.7                    | 3.6              | 2.1                | 0.0                          | 172.3                         | 16.0                 | 55.3          | 42.0           | 35.9                  | 0.0            | 0.0          | 1.2                 | 86.7                  | 638.6                                |
| 2002   | 131.6          | 139.2                    | 3.9              | 10.2               | 0.0                          | 106.7                         | 12.5                 | 32.0          | 36.4           | 27.4                  | 0.0            | 0.0          | 2.2                 | 71.9                  | 574.1                                |
| 2003   | 113.1          | 151.7                    | 2.5              | 3.0                | 0.0                          | 111.3                         | 24.9                 | 84.1          | 26.8           | 17.9                  | 0.0            | 0.0          | 0.0                 | 53.2                  | 588.5                                |
| 2004   | 110.4          | 178.7                    | 0.3              | 0.9                | 0.0                          | 104.9                         | 26.2                 | 110.3         | 40.6           | 18.1                  | 0.0            | 0.0          | 0.0                 | 41.6                  | 632.0                                |
| 2005   | 159.9          | 242.5                    | 0.0              | 1.1                | 0.0                          | 106.7                         | 41.0                 | 93.2          | 37.1           | 42.6                  | 0.0            | 0.0          | 0.1                 | 40.7                  | 764.9                                |
| 2006   | 203.0          | 273.2                    | 0.7              | 0.3                | 0.0                          | 94.8                          | 53.2                 | 47.6          | 10.8           | 68.7                  | 0.2            | 0.0          | 0.0                 | 65.5                  | 817.9                                |
| 2007   | 155.6          | 343.0                    | 0.6              | 4.9                | 0.0                          | 87.6                          | 53.2                 | 71.1          | 15.5           | 84.3                  | 0.0            | 0.0          | 0.0                 | 39.4                  | 855.1                                |
| <b>b) New Work for Private Sector</b>  |                |                          |                  |                    |                              |                               |                      |               |                |                       |                |              |                     |                       |                                      |
| <b>Year</b>  | <b>Housing</b> | <b>Infra - structure</b> | <b>Factories</b> | <b>Ware-houses</b> | <b>Oil, steel &amp; coal</b> | <b>Schools &amp; Colleges</b> | <b>Uni-versities</b> | <b>Health</b> | <b>Offices</b> | <b>Enter-tainment</b> | <b>Garages</b> | <b>Shops</b> | <b>Agri-culture</b> | <b>Miscell-aneous</b> | <b>All private sector</b>            |
| 2000   | 722.7          | 58.7                     | 68.0             | 21.3               | 0.0                          | 0.0                           | 0.0                  | 12.3          | 116.2          | 96.6                  | 5.6            | 44.4         | 0.1                 | 96.5                  | 1242.3                               |
| 2001   | 782.2          | 45.7                     | 46.0             | 23.9               | 1.0                          | 0.0                           | 0.0                  | 10.8          | 100.5          | 83.7                  | 7.7            | 109.8        | 0.2                 | 103.0                 | 1314.5                               |
| 2002   | 756.2          | 50.8                     | 58.6             | 40.7               | 0.0                          | 0.0                           | 0.0                  | 8.7           | 51.3           | 80.3                  | 5.3            | 109.1        | 0.0                 | 135.9                 | 1296.8                               |
| 2003   | 901.2          | 73.5                     | 41.1             | 50.3               | 0.8                          | 0.0                           | 0.0                  | 15.7          | 42.8           | 39.1                  | 4.3            | 122.7        | 1.2                 | 129.6                 | 1422.4                               |
| 2004   | 984.2          | 30.6                     | 38.1             | 39.8               | 1.3                          | 0.0                           | 0.0                  | 14.2          | 86.4           | 28.2                  | 2.3            | 153.0        | 2.5                 | 122.3                 | 1503.1                               |
| 2005   | 1098.5         | 35.8                     | 31.6             | 31.0               | 2.4                          | 0.0                           | 0.0                  | 19.4          | 79.2           | 43.4                  | 11.7           | 121.5        | 2.0                 | 108.4                 | 1585.0                               |
| 2006   | 1186.2         | 78.5                     | 53.0             | 30.8               | 0.0                          | 0.0                           | 0.0                  | 20.2          | 88.3           | 73.9                  | 12.8           | 180.7        | 1.6                 | 136.0                 | 1861.8                               |
| 2007   | 1175.8         | 95.2                     | 53.7             | 22.8               | 0.4                          | 0.0                           | 0.0                  | 24.5          | 78.9           | 92.2                  | 4.9            | 223.8        | 0.4                 | 113.8                 | 1886.4                               |
| <b>c) New Work for Public and Private Sector</b>                                 |                |                          |                  |                    |                              |                               |                      |               |                |                       |                |              |                     |                       |                                      |
| <b>Year</b>  | <b>Housing</b> | <b>Infra - structure</b> | <b>Factories</b> | <b>Ware-houses</b> | <b>Oil, steel &amp; coal</b> | <b>Schools &amp; Colleges</b> | <b>Uni-versities</b> | <b>Health</b> | <b>Offices</b> | <b>Enter-tainment</b> | <b>Garages</b> | <b>Shops</b> | <b>Agri-culture</b> | <b>Miscell-aneous</b> | <b>All Public &amp; Private Work</b> |
| 2000   | 810.1          | 196.3                    | 72.9             | 24.6               | 0.0                          | 80.1                          | 11.8                 | 80.3          | 146.7          | 185.4                 | 5.6            | 44.4         | 0.5                 | 160.1                 | 1818.9                               |
| 2001   | 893.9          | 157.4                    | 49.6             | 25.9               | 1.0                          | 172.3                         | 16.0                 | 66.2          | 142.5          | 119.6                 | 7.7            | 109.8        | 1.4                 | 189.7                 | 1953.2                               |
| 2002   | 887.8          | 190.0                    | 62.5             | 50.9               | 0.0                          | 106.7                         | 12.5                 | 40.7          | 87.7           | 107.7                 | 5.3            | 109.1        | 2.2                 | 207.9                 | 1870.9                               |
| 2003   | 1014.4         | 225.2                    | 43.6             | 53.3               | 0.8                          | 111.3                         | 24.9                 | 99.8          | 69.7           | 57.0                  | 4.3            | 122.7        | 1.2                 | 182.8                 | 2010.9                               |
| 2004   | 1094.6         | 209.3                    | 38.4             | 40.7               | 1.3                          | 104.9                         | 26.2                 | 124.5         | 127.0          | 46.2                  | 2.3            | 153.0        | 2.5                 | 163.9                 | 2135.0                               |
| 2005   | 1258.4         | 278.3                    | 31.6             | 32.1               | 2.4                          | 106.7                         | 41.0                 | 112.7         | 116.3          | 86.0                  | 11.7           | 121.5        | 2.1                 | 149.1                 | 2349.9                               |
| 2006   | 1389.2         | 351.6                    | 53.7             | 31.1               | 0.0                          | 94.8                          | 53.2                 | 67.7          | 99.0           | 142.6                 | 12.9           | 180.7        | 1.6                 | 201.5                 | 2679.7                               |
| 2007   | 1331.4         | 438.2                    | 54.3             | 27.7               | 0.4                          | 87.6                          | 53.2                 | 95.6          | 94.3           | 176.5                 | 4.9            | 223.8        | 0.4                 | 153.2                 | 2741.6                               |

<sup>1</sup> Includes output by contractors only

**Table 1.11 National Lottery Awards to Northern Ireland<sup>1</sup>**

| Year / Quarter | ARTS          |                              | HERITAGE      |                              | HEALTH, EDUCATION & ENVIRONMENT |                              | CHARITIES     |                              | SPORTS        |                              | TOTAL         |                              |
|----------------|---------------|------------------------------|---------------|------------------------------|---------------------------------|------------------------------|---------------|------------------------------|---------------|------------------------------|---------------|------------------------------|
|                | No. of Awards | Total Capital Value (£Thous) | No. of Awards | Total Capital Value (£Thous) | No. of Awards                   | Total Capital Value (£Thous) | No. of Awards | Total Capital Value (£Thous) | No. of Awards | Total Capital Value (£Thous) | No. of Awards | Total Capital Value (£Thous) |
| 2000 Jan - Mar | 14            | 361.7                        | 7             | 938.6                        | 0                               | 0                            | 29            | 417.1                        | 0             | 0                            | 50            | 1717.36                      |
| Apr - Jun      | 2             | 20.0                         | 10            | 5018.0                       | 0                               | 0                            | 27            | 612.1                        | 0             | 0                            | 39            | 5650.10                      |
| Jul - Sep      | 0             | 0                            | 1             | 162.0                        | 0                               | 0                            | 22            | 82.0                         | 0             | 0                            | 23            | 244.00                       |
| Oct - Dec      | 8             | 137.6                        | 6             | 1082.8                       | 0                               | 0                            | 14            | 122.7                        | 0             | 0                            | 28            | 1343.10                      |
| 2001 Jan - Mar | 15            | 273.4                        | 7             | 5448.6                       | 0                               | 0                            | 3             | 61.3                         | 37            | 1665.9                       | 62            | 7449.20                      |
| Apr - Jun      | 22            | 890.3                        | 3             | 889.5                        | 0                               | 0                            | 1             | 1.3                          | 14            | 618.5                        | 37            | 2339.50                      |
| Jul - Sep      | 1             | 3.3                          | 7             | 4996.0                       | 0                               | 0                            | 30            | 166.0                        | 7             | 18.3                         | 48            | 5183.60                      |
| Oct - Dec      | 4             | 9.3                          | 5             | 1222.5                       | 3                               | 9.9                          | 18            | 151.6                        | 9             | 520.6                        | 39            | 1913.90                      |
| 2002 Jan - Mar | 11            | 36.3                         | 15            | 3995.5                       | 29                              | 83.8                         | 47            | 241.8                        | 16            | 40.9                         | 118           | 4398.40                      |
| Apr - Jun      | 11            | 92.8                         | 2             | 52.7                         | 22                              | 76.5                         | 27            | 137.5                        | 7             | 14.8                         | 69            | 374.30                       |
| Jul - Sep      | 13            | 375.5                        | 15            | 4308.9                       | 10                              | 36.0                         | 18            | 323.5                        | 12            | 28.8                         | 68            | 5072.60                      |
| Oct - Dec      | 3             | 8.8                          | 5             | 1605.0                       | 15                              | 263.0                        | 16            | 833.1                        | 12            | 32.0                         | 51            | 2741.92                      |
| 2003 Jan - Mar | 4             | 329.9                        | 15            | 4023.4                       | 30                              | 192.5                        | 44            | 555.9                        | 20            | 48.8                         | 113           | 5150.49                      |
| Apr - Jun      | 30            | 757.5                        | 1             | 10.9                         | 26                              | 1661.2                       | 11            | 73.9                         | 13            | 35.7                         | 81            | 2539.24                      |
| Jul - Sep      | 6             | 55.9                         | 2             | 8.4                          | 24                              | 656.0                        | 22            | 343.3                        | 8             | 22.8                         | 62            | 1086.54                      |
| Oct - Dec      | 8             | 23.8                         | 2             | 53.7                         | 25                              | 524.6                        | 12            | 41.7                         | 15            | 46.0                         | 62            | 689.80                       |
| 2004 Jan - Mar | 2             | 8.6                          | 10            | 4198.6                       | 19                              | 82.9                         | 7             | 504.9                        | 7             | 28.0                         | 45            | 4822.90                      |
| Apr - Jun      | 5             | 19.0                         | 6             | 458.9                        | 12                              | 538.5                        | 7             | 23.7                         | 12            | 38.8                         | 42            | 1078.87                      |
| Jul - Sep      | 9             | 31.6                         | 2             | 5.6                          | 20                              | 71.5                         | 11            | 290.2                        | 12            | 50.6                         | 54            | 449.44                       |
| Oct - Dec      | 5             | 14.5                         | 1             | 4.2                          | 30                              | 703.5                        | 18            | 399.1                        | 15            | 51.9                         | 69            | 1173.21                      |
| 2005 Jan - Mar | 17            | 4635.4                       | 1             | 5.0                          | 10                              | 589.9                        | 8             | 332.2                        | 5             | 14.6                         | 41            | 5577.09                      |
| Apr - Jun      | 5             | 41.1                         | 0             | 0.0                          | 34                              | 529.3                        | 10            | 169.7                        | 15            | 53.9                         | 64            | 794.03                       |
| Jul - Sep      | 6             | 20.0                         | 3             | 11.7                         | 15                              | 168.2                        | 15            | 156.3                        | 6             | 28.2                         | 45            | 384.42                       |
| Oct - Dec      | 21            | 567.1                        | 1             | 5.0                          | 25                              | 1872.9                       | 19            | 452.4                        | 6             | 19.6                         | 72            | 2916.98                      |
| 2006 Jan - Mar | 0             | 0.0                          | 0             | 0.0                          | 14                              | 59.7                         | 14            | 583.4                        | 8             | 32.1                         | 36            | 675.05                       |
| Apr - Jun      | 16            | 642.4                        | 2             | 7.8                          | 20                              | 84.3                         | 18            | 74.3                         | 10            | 41.3                         | 66            | 850.18                       |
| Jul - Sep      | 9             | 308.6                        | 0             | 0.0                          | 6                               | 27.5                         | 15            | 68.3                         | 4             | 18.4                         | 34            | 422.80                       |
| Oct - Dec      | 0             | 0.0                          | 0             | 0.0                          | 3                               | 217.5                        | 6             | 161.5                        | 2             | 8.0                          | 11            | 387.09                       |
| 2007 Jan - Mar | 4             | 247.1                        | 0             | 0.0                          | 0                               | 0.0                          | 0             | 0.0                          | 0             | 0.0                          | 4             | 247.07                       |
| Apr - Jun      | 0             | 0.0                          | 0             | 0.0                          | 0                               | 0.0                          | 0             | 0.0                          | 10            | 4454.58                      | 10            | 4454.58                      |
| Jul - Sep      | 0             | 0.0                          | 0             | 0.0                          | 0                               | 0.0                          | 1             | 6.6                          | 0             | 0                            | 1             | 6.60                         |
| Oct - Dec      | 0             | 0.0                          | 0             | 0.0                          | 0                               | 0.0                          | 4             | 323.0                        | 0             | 0                            | 4             | 323.00                       |
| 2008 Jan - Mar | 0             | 0.0                          | 0             | 0.0                          | 0                               | 0.0                          | 52            | 2471.0                       | 0             | 0                            | 52            | 2471.05                      |

<sup>1</sup> Figures relate only to those awards with a capital element.

## Chapter 2 The Structure of the Industry

**Table 2.1 Structure of the Construction Industry**

The table below shows the number of businesses that are either registered for VAT with HM Customs and Excise or which operate a PAYE scheme with the Inland Revenue, at September 2007

| SIC (2003)<br>class/<br>subclass | Description   | Turnover (£000) size band |              |              |               |               |           | Total         |
|----------------------------------|---|---------------------------|--------------|--------------|---------------|---------------|-----------|---------------|
|                                  |   | 0 - 99                    | 100 - 499    | 500 - 1,999  | 2,000 - 4,999 | 5,000 - 9,999 | 10,000+   |               |
| 45.11                            | Demolition and wrecking of buildings; earth moving                          | 80                        | 60           | 15           | 5             | 0             | 0         | 165           |
| 45.12                            | Test drilling and boring  | 0                         | 5            | 0            | 0             | 0             | 0         | 15            |
| 45.21                            | General construction of buildings and civil engineering works               | 1,110                     | 1,615        | 680          | 195           | 75            | 75        | 3,745         |
| 45.22                            | Erection of roof coverings and frames                                       | 85                        | 105          | 20           | 0             | 0             | 0         | 220           |
| 45.23                            | Construction of motorways, roads, railways, airfields and sports facilities | 85                        | 135          | 35           | 5             | 0             | 0         | 270           |
| 45.24                            | Construction of water projects  | 5                         | 0            | 0            | 0             | 0             | 0         | 15            |
| 45.25                            | Other construction work involving special trades                            | 400                       | 380          | 85           | 10            | 5             | 0         | 880           |
| 45.31                            | Installation of electrical wiring and fittings                              | 620                       | 495          | 130          | 25            | 10            | 10        | 1,295         |
| 45.32                            | Insulation work activities  | 20                        | 30           | 15           | 0             | 0             | 0         | 70            |
| 45.33                            | Plumbing  | 455                       | 465          | 110          | 25            | 5             | 0         | 1,060         |
| 45.34                            | Other building installation   | 90                        | 75           | 20           | 5             | 0             | 0         | 190           |
| 45.41                            | Plastering  | 570                       | 235          | 25           | 0             | 0             | 0         | 530           |
| 45.42                            | Joinery installation  | 660                       | 515          | 100          | 10            | 0             | 0         | 1,290         |
| 45.43                            | Floor and wall covering   | 70                        | 95           | 20           | 5             | 0             | 0         | 190           |
| 45.44                            | Painting and glazing  | 180                       | 275          | 25           | 5             | 5             | 0         | 490           |
| 45.45                            | Other building completion   | 110                       | 100          | 25           | 0             | 0             | 0         | 235           |
| 45.50                            | Renting of construction or demolition equipment with operator               | 175                       | 90           | 35           | 10            | 0             | 0         | 315           |
| <b>Total</b>                     |   | <b>4,420</b>              | <b>4,685</b> | <b>1,335</b> | <b>325</b>    | <b>115</b>    | <b>95</b> | <b>10,985</b> |

Source: Inter Departmental Business Register, Office for National Statistics, Statistics Research Branch, Department of Enterprise, Trade and Investment

Figures have been rounded to the nearest 5 to avoid disclosure and thus figures may not add back to totals.

**Table 2.2 Northern Ireland Census of Employment  
September 2005  
Employee Jobs**

| SIC03    | BUSINESS DESCRIPTIONS   | Male      | Male      | Male   | Female    | Female    | Female | Total  |
|----------|---|-----------|-----------|--------|-----------|-----------|--------|--------|
|          |   | Full-time | Part-time |        | Full-time | Part-time |        |        |
| <b>F</b> | <b>CONSTRUCTION</b>   | 32,920    | 1,348     | 34,268 | 2,577     | 1,494     | 4,071  | 38,339 |
| 45       | Construction  | 32,920    | 1,348     | 34,268 | 2,577     | 1,494     | 4,071  | 38,339 |
| 451      | Site preparation  | 538       | 11        | 549    | 16        | 14        | 30     | 579    |
| 4511     | Demolition and wrecking of buildings; earth moving                          | *         | *         | *      | *         | *         | *      | *      |
| 4512     | Test drilling and boring  | *         | *         | *      | *         | *         | *      | *      |
| 452      | Building of complete constructions or parts thereof; civil engineering      | 17,927    | 751       | 18,678 | 1,426     | 776       | 2,202  | 20,880 |
| 4521     | General construction of buildings and civil engineering works               | 13,859    | 580       | 14,439 | 1,226     | 645       | 1,871  | 16,310 |
| 4522     | Erection of roof covering and frames  | *         | *         | *      | *         | *         | *      | 688    |
| 4523     | Construction of motorways, roads, railways, airfields and sports facilities | 1,931     | 61        | 1,992  | 76        | 36        | 112    | 2,104  |
| 4524     | Construction of water projects  | *         | *         | *      | *         | *         | *      | 24     |
| 4525     | Other construction work involving special trades                            | 1,529     | 84        | 1,613  | 81        | 60        | 141    | 1,754  |
| 45211    | Construction of commercial buildings  | 671       | 17        | 688    | 55        | 28        | 83     | 771    |
| 45212    | Construction of domestic buildings  | 8,299     | 442       | 8,741  | 696       | 471       | 1,167  | 9,908  |
| 45213    | Construction of civil engineering constructions                             | 4,889     | 121       | 5,010  | 475       | 146       | 621    | 5,631  |
| 453      | Building installation   | 8,633     | 233       | 8,866  | 731       | 398       | 1,129  | 9,995  |
| 4531     | Installation of electrical wiring and fittings                              | 5,052     | 99        | 5,151  | 412       | 195       | 607    | 5,758  |
| 4532     | Insulation work activities  | 226       | 10        | 236    | 19        | 18        | 37     | 273    |
| 4533     | Plumbing  | 3,045     | 110       | 3,155  | 258       | 167       | 425    | 3,580  |
| 4534     | Other building installation   | 310       | 14        | 324    | 42        | 18        | 60     | 384    |
| 454      | Building completion   | 4,977     | 320       | 5,297  | 364       | 276       | 640    | 5,937  |
| 4541     | Plastering  | 683       | 62        | 745    | 22        | 24        | 46     | 791    |
| 4542     | Joinery installation  | 1,765     | 138       | 1,903  | 133       | 115       | 248    | 2,151  |
| 4543     | Floor and wall covering   | 403       | 30        | 433    | 54        | 28        | 82     | 515    |
| 4544     | Painting and glazing  | 1,312     | 70        | 1,382  | 87        | 65        | 152    | 1,534  |
| 4545     | Other building completion   | 814       | 20        | 834    | 68        | 44        | 112    | 946    |
| 455      | Renting of construction or demolition equipment with operator               | 845       | 33        | 878    | 40        | 30        | 70     | 948    |
| *        | Not shown due to either no employees or confidentiality constraints         |           |           |        |           |           |        |        |

Source: NI Census of Employment, DEII, September 2005

- NOTES: 1 The Census of Employment is a statutory enquiry of all employers in Northern Ireland, carried out biennially under the Statistics of Trade and Employment (NI) Order 1988.
- 2 The Census of Employment covers employee jobs only. It excludes: agriculture (but includes animal husbandry service activities and hunting, trapping and game propagation) the self-employed, HM Armed Forces, private domestic servants, homeworkers and trainees without a contract of employment (non-employed status).
- 3 Persons working 30 hours or less per week are normally regarded as being in part-time employment.
- 4 The Census of Employment counts the number of jobs rather than the number of persons with jobs. Therefore a person holding both a full-time and a part-time job, or someone with two part-time jobs, will be counted twice.
- 5 Employees are classified to a Standard Industrial Classification (SIC03) from the business description for each employment unit.

**Table 2.3 Northern Ireland Employee Jobs<sup>1</sup> in Construction**

| Year | Quarter                  | Employee Jobs - Unadjusted | Quarterly Change- Unadjusted | Employee Jobs- Seasonally Adjusted | Quarterly Change- Seasonally Adjusted |
|------|--------------------------|----------------------------|------------------------------|------------------------------------|---------------------------------------|
| 2000 | March                    | 34,090                     | 160                          | 34,210                             | 380                                   |
|      | June                     | 34,470                     | 380                          | 34,610                             | 390                                   |
|      | September                | 35,240                     | 770                          | 35,110                             | 500                                   |
|      | December                 | 35,500                     | 260                          | 35,380                             | 270                                   |
| 2001 | March                    | 35,790                     | 290                          | 35,880                             | 500                                   |
|      | June                     | 35,810                     | 30                           | 35,950                             | 70                                    |
|      | September                | 36,090                     | 280                          | 35,990                             | 40                                    |
|      | December                 | 36,680                     | 590                          | 36,570                             | 570                                   |
| 2002 | March                    | 36,560                     | -120                         | 36,630                             | 70                                    |
|      | June                     | 36,300                     | -260                         | 36,410                             | -220                                  |
|      | September                | 36,280                     | -30                          | 36,220                             | -200                                  |
|      | December                 | 35,870                     | -410                         | 35,760                             | -460                                  |
| 2003 | March                    | 35,400                     | -460                         | 35,460                             | -300                                  |
|      | June                     | 35,930                     | 530                          | 36,020                             | 560                                   |
|      | September                | 36,010                     | 80                           | 35,970                             | -40                                   |
|      | December                 | 36,320                     | 310                          | 36,220                             | 250                                   |
| 2004 | March                    | 36,200                     | -120                         | 36,330                             | 110                                   |
|      | June                     | 36,250                     | 50                           | 36,290                             | -40                                   |
|      | September                | 36,320                     | 70                           | 36,250                             | -30                                   |
|      | December                 | 36,590                     | 270                          | 36,500                             | 260                                   |
| 2005 | March                    | 36,820                     | 240                          | 36,970                             | 470                                   |
|      | June                     | 37,800                     | 980                          | 37,830                             | 860                                   |
|      | September                | 38,340                     | 530                          | 38,240                             | 410                                   |
|      | December <sup>(R)</sup>  | 40,170                     | 1,840                        | 40,090                             | 1,840                                 |
| 2006 | March <sup>(R)</sup>     | 40,930                     | 750                          | 41,090                             | 1,010                                 |
|      | June <sup>(R)</sup>      | 41,540                     | 620                          | 41,470                             | 380                                   |
|      | September <sup>(R)</sup> | 41,970                     | 430                          | 41,950                             | 480                                   |
|      | December <sup>(R)</sup>  | 42,470                     | 500                          | 42,390                             | 430                                   |
| 2007 | March <sup>(R)</sup>     | 42,880                     | 410                          | 43,070                             | 680                                   |
|      | June <sup>(P)</sup>      | 44,260                     | 1,380                        | 44,180                             | 1,110                                 |
|      | September <sup>(P)</sup> | 44,960                     | 700                          | 44,930                             | 750                                   |
|      | December <sup>(R)</sup>  | 44,580                     | -380                         | 44,510                             | -420                                  |
| 2008 | March <sup>(P)</sup>     | 44,240                     | -560                         | 44,480                             | -230                                  |

Source: Quarterly Employment Survey (QES), DEII

<sup>1</sup> Figures are rounded to the nearest 10 and may not sum due to rounding.

(P) Provisional; (R) Revised

Notes:

Estimates of the number of employee jobs are obtained from the Quarterly Employment Survey (QES). The QES covers all public sector bodies, all private sector firms with 25 or more employees and a sample of the remainder. The sample size has been chosen in order that estimates of total employee jobs should be accurate to within +/- 1% of the Census of Employment total. The survey collects information on numbers of persons in full-time and part-time employment. It should be noted that the survey counts the number of jobs rather than the number of persons with jobs. For example, a person holding both a full-time job and a part-time job, or someone with two part-time jobs, will be counted twice.

| <b>Table 2.4 Northern Ireland Labour Force Survey<br/>Self employed in Construction Industry</b> |               |
|--|---------------|
| <b>Year (Quarter 2)</b>  | <b>Number</b> |
| 2007   | 30,000        |
| 2006   | 30,000        |
| 2005   | 32,000        |
| 2004   | 33,000        |
| 2003   | 29,000        |
| 2002   | 25,000        |
| 2001   | 25,000        |

Notes:

Quarter 2 comprises the months April, May and June.

Figures are rounded to the nearest thousand.

Above estimates are subject to sampling error.

Allocation between self employed and employees status is by self assessment.

The above estimates are based on re-weighted LFS estimates, which are in line with 2001 Census of Population results. Revisions to the self-employment series have also taken place to reflect improvements to the LFS editing procedures, based on the SOC 2000 Occupational Classification, which allow data edits to be removed which previously re-classified some self-employed as employees.

## Table 2.5 Northern Ireland Annual Survey of Hours and Earnings

### Earnings and Hours in the Construction Industry

full-time male employees, on adult rates, whose pay was not affected by absence

Construction Industry - SIC 2003 Division F

| At April<br>Each<br>Year | Mean gross weekly earnings<br>Of Which |                 |         |                     |  | Percentage of employees<br>who received |         |                     |
|--------------------------|--|-----------------|---------|---------------------|--|---|---------|---------------------|
|                          | Total                                  | Overtime<br>Pay | PBR etc | Premium<br>payments |  | Overtime<br>pay                         | PBR etc | Premium<br>payments |
| 2002                     | £371.0                                 | £31.3           | x       | x                   |  | 30.6%                                   | 7.5%    | 2.6%                |
| 2003                     | £386.9                                 | £25.6           | x       | x                   |  | 28.2%                                   | 13.6%   | 1.4%                |
| 2004                     | £399.2                                 | £25.8           | x       | x                   |  | 25.8%                                   | 7.9%    | 3.1%                |
| 2004 <sup>1</sup>        | £403.5                                 | £25.1           | x       | x                   |  | 24.9%                                   | 4.8%    | 3.0%                |
| 2005 <sup>1</sup>        | £392.7                                 | £17.7           | x       | x                   |  | 20.0%                                   | 6.0%    | 1.1%                |
| 2006 <sup>1</sup>        | £430.6                                 | £26.8           | x       | x                   |  | 23.4%                                   | 5.0%    | 2.7%                |
| 2006 <sup>2</sup>        | £429.6                                 | £27.2           | x       | x                   |  | 23.5%                                   | 4.8%    | 2.8%                |
| 2007 <sup>2</sup>        | £451.8                                 | £26.6           | x       | x                   |  | 21.2%                                   | 4.7%    | 2.0%                |

| At April<br>Each<br>Year | Distribution of weekly earnings |                                      |                            | Mean<br>hourly<br>earnings<br>excluding<br>overtime* | Mean weekly hours  |                                     |
|--------------------------|---------------------------------|--------------------------------------|----------------------------|--|--|-------------------------------------|
|                          | 10%<br>earned less<br>than      | Median<br>50%<br>earned less<br>than | 10%<br>earned<br>more than |  | Mean<br>total weekly<br>hours<br>(including<br>overtime) | Mean<br>weekly<br>overtime<br>hours |
| 2002                     | £215.8                          | £328.4                               | £549.4                     | £8.60  | 42.4   | 2.9                                 |
| 2003                     | £234.5                          | £349.0                               | £591.9                     | £9.12  | 42.0   | 2.4                                 |
| 2004                     | £223.1                          | £336.3                               | x                          | £9.35  | 42.3   | 2.4                                 |
| 2004 <sup>1</sup>        | £231.9                          | £336.0                               | x                          | £9.47  | 42.3   | 2.3                                 |
| 2005 <sup>1</sup>        | £185.9                          | £340.0                               | x                          | £9.34  | 41.7   | 1.5                                 |
| 2006 <sup>1</sup>        | £203.0                          | £375.5                               | x                          | £10.22   | 41.5   | 2.0                                 |
| 2006 <sup>2</sup>        | £205.6                          | £373.3                               | x                          | £10.19   | 41.5   | 2.0                                 |
| 2007 <sup>2</sup>        | £240.0                          | £390.8                               | x                          | £10.56   | 42.5   | 2.2                                 |

PBR - payment by results, includes piecework, bonuses, commission and incentive payments (includes profit related pay until 1996).

Premium pay - for shift-work, and for night or week-end work where these are not treated as overtime.

x - data unavailable or suppressed

\* Average hourly earnings are calculated by dividing the sum of the weekly earnings of the group of employees by the sum of their total weekly hours.

<sup>1</sup> To improve coverage, supplementary data was collected for the 2004 and subsequent ASHE surveys for people who changed or started new jobs between sample selection and the survey period. The ASHE results since 2004 are therefore discontinuous with earlier results.

<sup>2</sup> For 2006 and 2007 ASHE results, ONS has also introduced a small number of methodological changes. The ASHE results since 2006 are therefore discontinuous with earlier results.

**Table 2.6 Northern Ireland Annual Survey of Hours and Earnings  
Earnings in the Construction Industry by Occupation**

full-time male employees, on adult rates, whose pay was not affected by absence

| At April<br>Each<br>Year | SOC 531 - Construction<br>trades |   | SOC 5315 - carpenters and<br>joiners |   | SOC 912 - elementary<br>construction occupations |   |
|--------------------------|----------------------------------|---|--------------------------------------|---|--|---|
|                          | Mean<br>gross weekly<br>earnings | Mean<br>hourly<br>earnings<br>excluding<br>overtime | Mean<br>gross weekly<br>earnings     | Mean<br>hourly<br>earnings<br>excluding<br>overtime | Mean<br>gross weekly<br>earnings                 | Mean<br>hourly<br>earnings<br>excluding<br>overtime |
| 2002                     | £319.8                           | £7.43   | £312.7                               | £7.33   | £275.2   | £5.83   |
| 2003                     | £367.6                           | £8.28   | £334.3                               | £7.59   | £274.9   | £6.19   |
| 2004                     | £345.6                           | £8.01   | £343.0                               | £7.57   | £336.0   | £7.49   |
| 2004 <sup>1</sup>        | £348.8                           | £8.09   | £345.8                               | £7.64   | £334.4   | £7.46   |
| 2005 <sup>1</sup>        | £332.5                           | £7.97   | £340.6                               | £7.85   | £321.3   | £7.03   |
| 2006 <sup>1</sup>        | £404.2                           | £9.13   | £377.3                               | £8.53   | £292.0   | £6.69   |
| 2006 <sup>2</sup>        | £407.9                           | £9.19   | £379.1                               | £8.56   | £291.7   | £6.70   |
| 2007 <sup>2</sup>        | £417.0                           | £9.51   | £421.9                               | £9.56   | £338.4   | £7.67   |

SOC - Standard Occupational Classification 2000

<sup>1</sup> To improve coverage, supplementary data was collected for the 2004 and subsequent ASHE surveys for people who changed or started new jobs between sample selection and the survey period. The ASHE results since 2004 are therefore discontinuous with earlier results.

<sup>2</sup> For 2006 and 2007 ASHE results, ONS has also introduced a small number of methodological changes. The ASHE results since 2006 are therefore discontinuous with earlier results.

**Table 2.7 Northern Ireland Annual Survey of Hours and Earnings**  
**Earnings and Hours in the Construction Industry and in all Industries and Services**  
 full-time male employees, on adult rates, whose pay was not affected by absence  
 Construction Industry - SIC 2003 Division F

| FULL-TIME MALES          |                                     |  |  |                             |                                  |  |   |
|--------------------------|-------------------------------------|--|--|-----------------------------|----------------------------------|--|---|
| CONSTRUCTION INDUSTRY    |                                     |  |  | ALL INDUSTRIES AND SERVICES |                                  |  |   |
| At April<br>Each<br>Year | Mean<br>gross<br>weekly<br>earnings | Mean<br>hourly<br>earning<br>excluding<br>overtime | Mean total<br>weekly<br>hours<br>(including<br>overtime) |                             | Mean gross<br>weekly<br>earnings | Mean<br>hourly<br>earning<br>excluding<br>overtime | Mean total<br>weekly hours<br>(including<br>overtime) |
| 2002                     | £371.0                              | £8.60  | 42.4   |                             | £431.9                           | £10.44   | 41.1  |
| 2003                     | £386.9                              | £9.12  | 42.0   |                             | £447.7                           | £10.91   | 40.7  |
| 2004                     | £399.2                              | £9.35  | 42.3   |                             | £466.0                           | £11.21   | 41.3  |
| 2004 <sup>1</sup>        | £403.5                              | £9.47  | 42.3   |                             | £463.5                           | £11.16   | 41.3  |
| 2005 <sup>1</sup>        | £392.7                              | £9.34  | 41.7   |                             | £486.5                           | £11.75   | 41.1  |
| 2006 <sup>1</sup>        | £430.6                              | £10.22   | 41.5   |                             | £502.9                           | £12.20   | 41.1  |
| 2006 <sup>2</sup>        | £429.6                              | £10.19   | 41.5   |                             | £500.9                           | £12.15   | 41.1  |
| 2007 <sup>2</sup>        | £451.8                              | £10.56   | 42.5   |                             | £504.4                           | £12.25   | 41.0  |

<sup>1</sup> To improve coverage, supplementary data was collected for the 2004 and subsequent ASHE surveys for people who changed or started new jobs between sample selection and the survey period. The ASHE results since 2004 are therefore discontinuous with earlier results.

<sup>2</sup> For 2006 and 2007 ASHE results, ONS has also introduced a small number of methodological changes. The ASHE results since 2006 are therefore discontinuous with earlier results.

## 2.8 Statistics of accidents reported to HSENI 2000/01 – 2006/07

### 2.8.1. All accidents – fatal, major injury and over 3 day

| Year       | Fatal | Major | Over 3 Day | Total |
|------------|-------|-------|------------|-------|
| 2000/01    | 12    | 578   | 3,421      | 4,011 |
| 2001/02    | 9     | 595   | 3,547      | 4,151 |
| 2002/03    | 21    | 650   | 3,039      | 3,710 |
| 2003/04    | 19    | 675   | 2,642      | 3,336 |
| 2004/05    | 15    | 640   | 2,359      | 3,014 |
| 2005/06(P) | 20    | 599   | 2,645      | 3,264 |
| 2006/07    | 18    | 502   | 2,462      | 2,982 |

### 2.8.2. All accidents by industrial sector

| Year       | Agric | Constr | Mfg&Q <sup>1</sup> | Educ | Health | Other | Total |
|------------|-------|--------|--------------------|------|--------|-------|-------|
| 2000/01    | 72    | 245    | 1,259              | 380  | 498    | 1,557 | 4,011 |
| 2001/02    | 57    | 236    | 1,195              | 392  | 467    | 1,804 | 4,151 |
| 2002/03    | 54    | 212    | 1,030              | 481  | 505    | 1,428 | 3,710 |
| 2003/04    | 42    | 246    | 963                | 350  | 454    | 1,281 | 3,336 |
| 2004/05    | 37    | 250    | 863                | 275  | 442    | 1,147 | 3,014 |
| 2005/06(P) | 44    | 303    | 896                | 336  | 514    | 1,171 | 3,264 |
| 2006/07    | 33    | 289    | 809                | 328  | 483    | 1,040 | 2,982 |

### 2.8.3. Major accidents by industrial sector

| Year       | Agric <sup>2</sup> | Constr | Mfg & Q | Educ | Health | Other | Total |
|------------|--------------------|--------|---------|------|--------|-------|-------|
| 2000/01    | N/A                | 68     | 122     | 206  | 52     | 130   | 578   |
| 2001/02    | N/A                | 55     | 147     | 199  | 58     | 136   | 595   |
| 2002/03    | N/A                | 60     | 116     | 293  | 58     | 123   | 650   |
| 2003/04    | N/A                | 81     | 148     | 181  | 86     | 179   | 675   |
| 2004/05    | N/A                | 98     | 146     | 119  | 88     | 189   | 640   |
| 2005/06(P) | N/A                | 87     | 134     | 154  | 88     | 136   | 599   |
| 2006/07    | N/A                | 91     | 129     | 84   | 57     | 135   | 497   |

### 2.8.4. Fatal accident incidence rates per 100,000 workers by industrial sector

| Year       | Agriculture | Construction | Manufacturing | All Industries |
|------------|-------------|--------------|---------------|----------------|
| 2000/01    | 19.16       | 8.5          | 1.91          | 0.94           |
| 2001/02    | 13.69       | 11.4         | 1.01          | 0.93           |
| 2002/03    | 12.4        | 12.7         | 1             | 2.6            |
| 2003/04    | 19.2        | 10.2         | 0             | 2.3            |
| 2004/05    | 11.9        | 6.7          | 2             | 1.6            |
| 2005/06(P) | 28.5        | 7.4          | 3.1           | 2.3            |
| 2006/07    |             |              |               |                |

<sup>1</sup> Mfg & Q: Manufacturing and Quarries.

<sup>2</sup> Non-fatal Agriculture accidents are not classified as "major" and "over 3 day", but simply as "non-fatal".

( P ) = provisional figures

| <b>2.8.5. Construction sector – cause of accident by type of accident</b> |                |              |                   |                |              |                   |
|---|----------------|--------------|-------------------|----------------|--------------|-------------------|
| <b>Cause</b>  | <b>2000/01</b> |              |                   | <b>2001/02</b> |              |                   |
|   | <b>Fatal</b>   | <b>Major</b> | <b>Over 3 day</b> | <b>Fatal</b>   | <b>Major</b> | <b>Over 3 day</b> |
| Fall  | 3              | 39           | 38                | 0              | 24           | 36                |
| Struck by   | 0              | 8            | 35                | 1              | 7            | 35                |
| Handling, strains/sprains   | 0              | 5            | 35                | 0              | 1            | 35                |
| Slip or trip  | 0              | 2            | 21                | 0              | 4            | 24                |
| Vehicle   | 0              | 5            | 6                 | 0              | 1            | 4                 |
| Collapsing or overturning   | 0              | 2            | 2                 | 1              | 2            | 3                 |
| Others  | 0              | 7            | 37                | 2              | 16           | 34                |
| <b>Totals</b>   | <b>3</b>       | <b>68</b>    | <b>174</b>        | <b>4</b>       | <b>55</b>    | <b>171</b>        |
| <b>Cause</b>  | <b>2002/03</b> |              |                   | <b>2003/04</b> |              |                   |
|   | <b>Fatal</b>   | <b>Major</b> | <b>Over 3 day</b> | <b>Fatal</b>   | <b>Major</b> | <b>Over 3 day</b> |
| Fall  | 5              | 29           | 20                | 3              | 29           | 34                |
| Struck by   | 0              | 6            | 27                | 0              | 16           | 26                |
| Handling, strains/sprains   | 0              | 2            | 31                | 0              | 4            | 41                |
| Slip or trip  | 0              | 7            | 30                | 0              | 18           | 27                |
| Vehicle   | 0              | 3            | 4                 | 0              | 1            | 3                 |
| Collapsing or overturning   | 2              | 1            | 5                 | 3              | 2            | 3                 |
| Others  | 2              | 12           | 26                | 0              | 11           | 26                |
| <b>Totals</b>   | <b>9</b>       | <b>60</b>    | <b>143</b>        | <b>6</b>       | <b>81</b>    | <b>160</b>        |

**2.8.5. Construction sector – cause of accident by type of accident (continued)**

| Cause                     | 2004/05  |           |            | 2005/06(p) |           |            |
|---------------------------|----------|-----------|------------|------------|-----------|------------|
|                           | Fatal    | Major     | Over 3 day | Fatal      | Major     | Over 3 day |
| Fall                      | 2        | 40        | 25         | 3          | 42        | 31         |
| Struck by                 |          | 16        | 23         |            | 13        | 48         |
| Handling, strains/sprains |          | 10        | 50         |            | 5         | 55         |
| Slip or trip              |          | 17        | 17         |            | 12        | 28         |
| Vehicle                   | 1        | 1         | 3          |            | 1         | 8          |
| Collapsing or overturning | 1        | 3         | 2          |            | 1         | 1          |
| Others                    |          | 11        | 24         | 2          | 13        | 40         |
| <b>Totals</b>             | <b>4</b> | <b>98</b> | <b>148</b> | <b>5</b>   | <b>87</b> | <b>211</b> |

| Cause                     | 2006/07  |           |            | Fatal | Major | Over 3 day |
|---------------------------|----------|-----------|------------|-------|-------|------------|
|                           | Fatal    | Major     | Over 3 day |       |       |            |
| Fall                      | 1        | 40        | 33         |       |       |            |
| Struck by                 |          | 15        | 28         |       |       |            |
| Handling, strains/sprains |          | 5         | 36         |       |       |            |
| Slip or trip              |          | 16        | 38         |       |       |            |
| Vehicle                   |          | 7         | 2          |       |       |            |
| Collapsing or overturning | 2        | 2         | 1          |       |       |            |
| Others                    | 3        | 7         | 42         |       |       |            |
| <b>Totals</b>             | <b>6</b> | <b>92</b> | <b>180</b> |       |       |            |

## 2.8.6. Construction sector – description of fatal accidents

| Year    | Number of Fatalities | Occupation             | Employment Category  | Description  | Date                            |
|---------|----------------------|------------------------|----------------------|--|---------------------------------|
| 2000/01 | 3                    | Plumber                | Self-employed        | Fell 13m from landing.   | 28/04/2000                      |
|         |                      | Labourer               | Employee             | Fell from scaffolding.   | 25/09/2000<br>(Died 04 10 2000) |
|         |                      | Demolition worker      | Employee             | Fell through opening in floor of industrial premises.                                    | 16/11/2000                      |
| 2001/02 | 4                    | Joiner                 | Employee             | Crushed under bale of reinforced mesh that fell 8m during lifting operation.             | 21/06/2001                      |
|         |                      | Electrician            | Self-employed        | Electrocuted while rewiring a house.   | 19/11/2001                      |
|         |                      | Builder                | Self-employed        | Crushed when entangled between slewing ring and digger tracks.                           | 04/12/2001                      |
|         |                      | Worker                 | Employee             | Electrocuted when boom of excavator came in contact with 33kv overhead power lines.      | 15/12/2001                      |
| 2002/03 | 8 +1 child           | Painter                | Employee             | Electrocuted while working from MEWP when it came into contact with overhead power line. | 08/05/2002                      |
|         |                      | Child (boy aged 5 yrs) | Member of the public | Trapped in 225mm diameter sewer pipe.  | 01/06/2002                      |
|         |                      | Roofer                 | Self-employed        | Fell from roof while carrying out minor repairs.   | 19/07/2002                      |
|         |                      | Labourer               | Self-employed        | Crushed underneath staircase that collapsed.   | 03/09/2002                      |
|         |                      | Labourer               | Employee             | Fell following collapse of 8 staircases during placing of the staircases.                | 03/09/2002                      |
|         |                      | Businessman            | Self-employed        | Crushed under wall knocked over by arm of excavator.                                     | 18/11/2002                      |
|         |                      | Joiner                 | Employee             | Fell 3.6m from cage mounted on telescopic handler; cage also fell onto the deceased.     | 03/12/2002                      |
|         |                      | Mastic asphalter       | Employee             | Slipped on hip roof and fell underneath middle guard rail and onto flat roof             | 21/01/2003<br>(Died 23 01 2003) |
|         |                      | Builder                | Self-employed        | Fell 13.5m from extension ladder mounted on top of tower scaffold.                       | 07/02/2003                      |

## 2.8.6. Construction sector – description of fatal accidents (continued)

| Year    | Number of Fatalities | Occupation                | Employment Category | Description   | Date                            |
|---------|----------------------|---------------------------|---------------------|---|---------------------------------|
| 2003/04 | 6                    | Joiner                    | Employee            | Fell 2.8m through an opening in the floor of a timber framed house                            | 14 05 2003<br>(Died 16 05 2003) |
|         |                      | Sub-contractor            | Self-employed       | Crush in a trench collapse  | 30/08/2003                      |
|         |                      | Mushroom Picker           | Employee            | Crushed under an overturned excavator   | 23/10/2003                      |
|         |                      | Labourer                  |                     | Fell from a ladder  | 17/11/2003                      |
|         |                      | Digger driver             | Self-employed       | Crushed under a wall collapse during demolition   | 10 12 2003<br>(Died 21 02 2004) |
|         |                      | Builder                   | Self-employed       | Fell approx 7m off a roof   | 04/03/2004                      |
| 2004/05 | 4                    | Joiner                    | Employed            | Fell approx 2.4m from a wall with wet mortar  | 04 10 2004<br>(Died 07 10 2004) |
|         |                      | Labourer                  | Employed            | Crushed under a wall collapse   | 12/02/2005                      |
|         |                      | Roofer                    | Employed            | Fell approx.12.3m from a roof   | 15/03/2005                      |
|         |                      | Road Worker               | Self-employed       | Knocked over by a reversing lorry   | 22/03/2005                      |
| 2005/06 | 5                    | Roofer                    | Employee            | Fell approx. 5m through a roof light onto concrete floor                                      | 30 05 2005                      |
|         |                      | Fitter                    | Employee            | Died in explosion at water treatment works whilst carrying out construction maintenance work  | 06/02/2006                      |
|         |                      | Farmer                    | Self-employed       | Fell from roof (5m) through Perspex skylight on corrugated farm shed                          | 13 10 2005<br>(Died 14 10 2005) |
|         |                      | Painter/ decorator        | Employee            | Fell from ladder whilst painting fascia at eaves of house                                     | 12/06/2005                      |
|         |                      | Road Worker               | Self-employed       | Electrocuted when an articulated lorry made contact with an overhead powerline                | 28 02 2006                      |
| 2006/07 | 6                    | Maintenance               | Employee            | Fell from roof into well at Stewart Hall, Stewartstown  | 01/05/2006                      |
|         |                      | Construction Worker       | Employee            | Buried when a trench collapsed on top of him at construction site, Ballywalter Road, Millisle | 08/05/2006                      |
|         |                      | Digger driver             | Self-employed       | A 9" wall collapsed on him during ground work on a farmyard near Limavady.                    | 27/07/2006                      |
|         |                      | Joiner                    | Employee            | Mobile building collapsed on top of IP when it was being moved at RAF Aldergrove.             | 19/09/2006                      |
|         |                      | Telescopic Handler Driver | Employee            | Drowned in tank at construction of new pumping station in Portrush.                           | 06/10/2006                      |
|         |                      | Engineer                  |                     | Electrocuted when drilling rig made contact with overhead power line.                         | 31/01/2007                      |
| 2007/08 | 5                    | Grab Driver               | Employed            | Struck by lorry while standing beside his vehicle   | 02/05/2007                      |
|         |                      | Builder*                  | Self Employed       | Fell from scaffolding at a site in Dunmurry   | 11/08/2007 (died 18/08/2007)    |
|         |                      | Builder*                  | Self Employed       | Fell from garage roof at a house under construction in Ballynahinch                           | 12/09/2007                      |
|         |                      | General Labourer          | Employed            | Died from injuries received when struck by collapsing gable wall in Fintona                   | 25/01/2008                      |
|         |                      | General Labourer          | Employed            | Struck by reversing vehicle on site in Belfast  | 27/02/2008                      |

\* accidents not reportable under RIDDOR but investigated by HSENI

## Survey Response for QCE

For the quarter 1<sup>st</sup> January to 31<sup>st</sup> March 2008, 88% of contracting firms in the sample participated in the survey. A breakdown of response by stratum is highlighted below. Construction firms are stratified according to annual turnover, ranging from the small stratum one firms with an annual turnover of less than £125,000 through to the large stratum six firms which have an annual turnover in excess of £10.5 million.

As can be seen from the table, a high level of response was achieved from stratum 3 to 6 firms. Response was lower from stratum 1 and 2 firms. Each quarter, there is ongoing effort to improve overall response.

| <b>2008 Jan-Mar</b> | <b>Stratum</b> | <b>Annual Turnover (£ '000)</b> | <b>Response (%)</b> |
|---------------------|----------------|---------------------------------|---------------------|
|                     | 1              | 0 - 124                         | 60                  |
|                     | 2              | 125 - 549                       | 73                  |
|                     | 3              | 550 - 2,099                     | 93                  |
|                     | 4              | 2,100 - 5,249                   | 100                 |
|                     | 5              | 5,250 - 10499                   | 92                  |
|                     | 6              | 10,500+                         | 93                  |
|                     | <b>Overall</b> |                                 | <b>88</b>           |

## Notes to Editors

1. Statistics derived from the QCE are based on returns made by Construction Firms and Public Sector Direct Labour Departments.
2. The sample of firms in the QCE includes only VAT registered firms in Standard Industrial Classification Division 45 (Construction) on the Inter Departmental Business Register (IDBR).
3. Construction activity measured by QCE includes general construction and demolition work, construction and repair of buildings, civil engineering, installation of fixtures and fittings and any other building completion work.
4. The following definitions are used in the QCE to describe Construction Activity:

New Work is any new construction activity e.g. factory and office extensions, major re-construction, major alterations, site preparation and demolition.

Repair and Maintenance is all on-site work not defined as new construction, e.g. housing conversions, extensions and improvements.

Housing refers to all housing construction activity, both private and public sector.

Infrastructure refers to any work on roads and car parks, water and sewerage, electricity, gas, communications, air transport, railways, harbours and waterways.

Other Work refers to factories, warehouses, oil, steel gas and coal, schools and colleges, offices and banks, shops, universities, entertainment, agriculture, health and welfare, garages and miscellaneous.

5. The base year for all the series published is 2000 (2000 = 100).
6. Tables 1.1, 1.2, 1.3, 1.4, 1.5, 1.6, 1.7, 1.8 (b) are all seasonally adjusted. Seasonal adjustment aids interpretation by removing seasonal variation. The data is seasonally adjusted using X11 ARIMA software.
7. Figures may not always tally due to rounding and seasonal adjustment.

8. Results, particularly for the latest quarter, are provisional and subject to revision as fuller information becomes available.

The time series contained within Chapter 1-Output are updated quarterly to take account of:

- Firms not returning forms on schedule;
- Validation of data;
- Changes to Grossing Factors;
- Changes to the Seasonal Adjusters;

9. The QCE is a sample survey, the results of which are subject to both sampling and non-sampling error.

For further information please contact Mr Peter Scott:

Telephone (028) 9034 8235 E-mail [peter.scott@dfpni.gov.uk](mailto:peter.scott@dfpni.gov.uk)

Fax (028) 9034 8276

Electronic and hard copies of this bulletin are available from:

Central Survey Unit  
Northern Ireland Statistics and Research Agency  
McAuley House  
2 - 14 Castle Street  
BELFAST  
BT1 1SY

Or on the Central Survey Unit Website at <http://www.csu.nisra.gov.uk>