

## **CONTINUOUS HOUSEHOLD SURVEY**

### **FIRST RELEASE OF 2010/11 FIGURES**

The Continuous Household Survey (CHS) is one of the largest continuous surveys carried out in Northern Ireland. It is designed to provide a regular source of information on a wide range of social and economic issues relevant to Northern Ireland. The survey is based on a random probability sample of the general population resident in private households throughout Northern Ireland. The survey has been running since 1983 and in addition to providing up to date annual figures it now reflects changing trends in Northern Ireland over a period of more than 25 years.

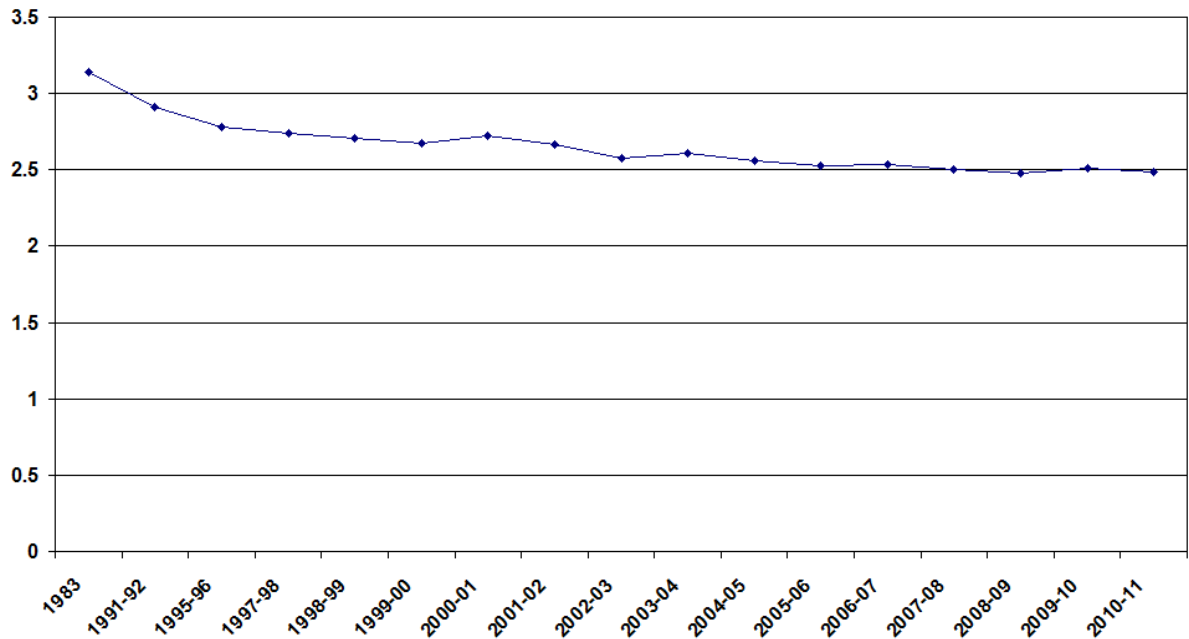
This First Release Statement details just a few of the latest findings from the 2010/11 survey.

The CHS web tables, which contain extensive information on a wide range of topics, have been updated to incorporate the 2010/11 results and are available on the Central Survey Unit website at <http://www.csu.nisra.gov.uk/survey.asp29.htm>. These are the latest additions to the CHS tables which contain survey data and trends going back to 1983.

## Households and Families

In 2010/11, average household size in Northern Ireland was 2.49 persons. Average household size in Northern Ireland has remained broadly at the same level for the last five years.

Figure 1: Average household size - 1983 to 2010/11



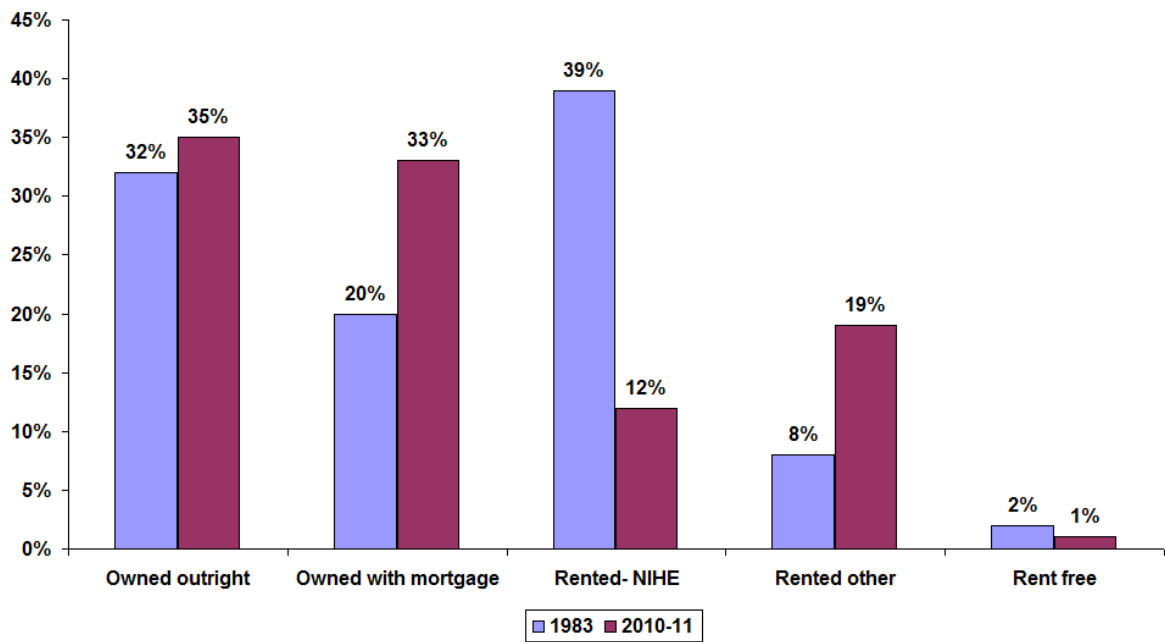
Small households, containing 1 or 2 persons, accounted for 59% of all households in 2010/11. Large households (those containing 5 or more persons) represented 10% of all households.

In 2010/11, 69% of households consisted of adults only (persons aged 16 and over) and 31% contained at least one child under 16.

## Housing

In 2010/11, 68% of NI households were living in owner occupied properties, 19% were living in privately rented properties and 12% rented their homes from the Northern Ireland Housing Executive.

Figure 2: Breakdown of tenure - 1983 to 2010/11



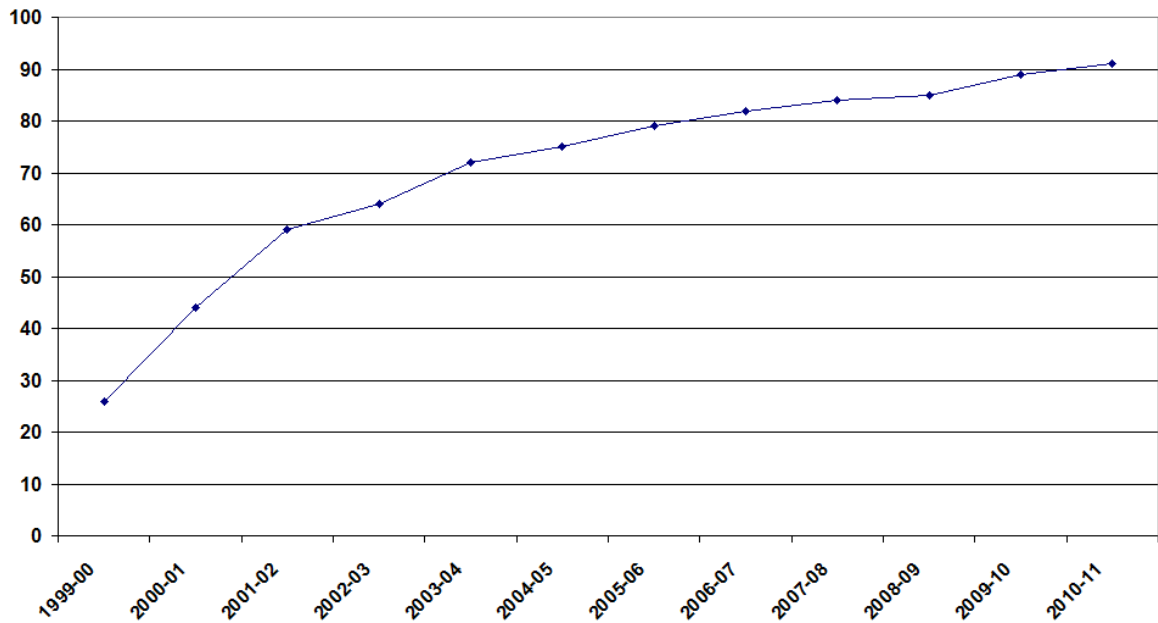
## Internet Access

In 2010/11, two-thirds of households (66%) used their home computer to access the internet. Of these households, practically all (95%) had a broadband connection.

## Mobile Phone Ownership

The vast majority of adults (91%) said that they had a mobile phone.

Figure 3: Mobile phone ownership

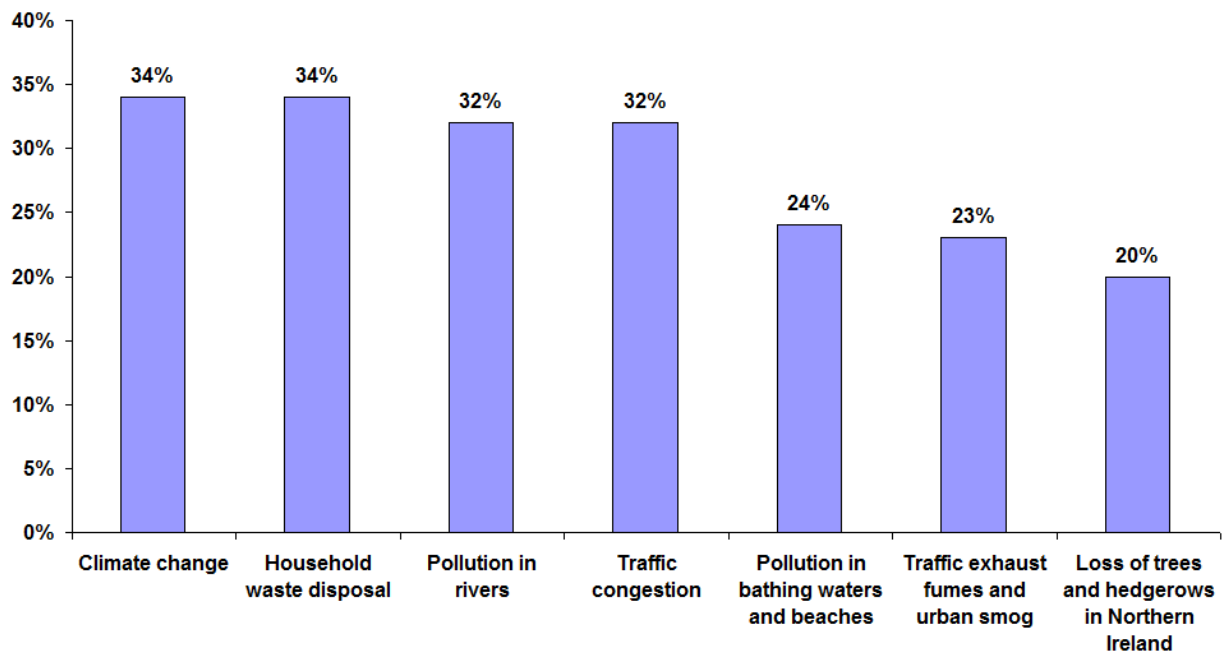


## Environmental Issues

Northern Ireland households said that they had taken a range of actions to protect the environment in the previous 12 months. 70% of households used energy saving light bulbs, 65% reused plastic bags and almost half of households (47%) said that they had cut down the amount of energy used in the home.

When provided with a list of important environmental problems, the most commonly selected responses by Northern Ireland households were household waste disposal (34%), climate change (34%), traffic congestion (32%) and pollution in rivers (32%).

**Figure 4: Most important environmental problems**



## **General Health**

In 2010/11, 83% of adults reported that their health had been good or fairly good over the past 12 months.

One third (34%) of adults in 2010/11 said that they had a long-standing illness.

One quarter of adults (25%) stated that they had a long-standing illness which limits their activities.

Further information about the CHS is available from:

Central Survey Unit  
Northern Ireland Statistics and Research Agency  
McAuley House  
2-14 Castle Street  
BELFAST  
BT1 1SY

Contact name: Mr Jonathan Harvey  
Telephone: (028) 9034 8202  
Fax: (028) 9034 8276  
E-mail: [Jonathan.Harvey@dfpni.gov.uk](mailto:Jonathan.Harvey@dfpni.gov.uk)  
Web: <http://www.csu.nisra.gov.uk>