

# Continuous Household Survey 2009/10 Bulletin

Bulletin 9

September 2010

## Contents

- Households and Families
- Housing and Accommodation
- Consumer Durables
- Health
- Finance
- Educational Attainment
- Environmental Issues
- Sport and Leisure
- Smoking

### Please note:

Increases, Decreases and Comparisons where noted can be read as statistically significant

The Continuous Household Survey (CHS) provides a regular source of information on a wide range of social and economic issues in Northern Ireland and has been running since 1983.

The survey is based on a random sample of 4,500 domestic addresses drawn from the Land and Property Services Agency list of addresses. Interviews are sought with all adults aged 16 and over in the selected households. The findings reported in this

Bulletin are based on the responses of 2,764 households who took part in the survey.

The nature and aims of the CHS are similar to those of the General Lifestyle Survey carried out by the Office for National Statistics (ONS) in Great Britain.

In addition to this bulletin, a wide range of additional results and technical details are available at [www.csu.nisra.gov.uk](http://www.csu.nisra.gov.uk).

## Households and Families

### Household Size and Composition

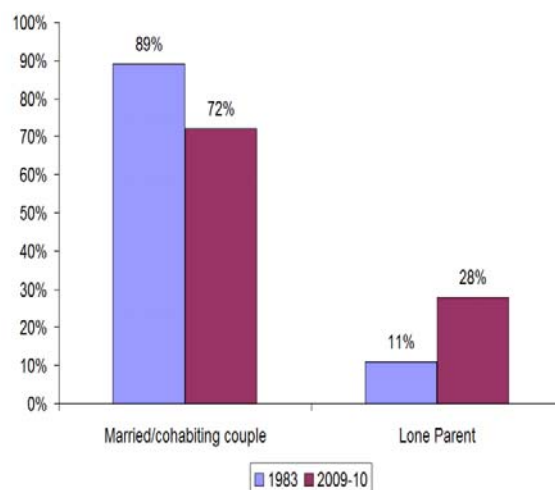
Between 1983 and 2009/10, the average size of household in Northern Ireland has declined from 3.14 persons to 2.51. Average household size in Northern Ireland has remained broadly at the same level for the last five years.

In 2009/10, 27% of households contained one person only while a third contained two people (32%). The remaining 41% consisted of three people or more.

Trends in household composition have changed considerably since 1983. The proportion of single person households has increased from 20% to 27%. Over the same period, the proportion of households containing two persons has also increased from 26% to 32%. The proportion of households containing five or more persons has decreased from 21% to 9%.

The change in household composition is also reflected in the type of households that exist in Northern Ireland. The proportion of households containing a single adult aged 16-59 has almost tripled from 5% to 13%. There has also been an increase in the proportion of households containing two adults aged 16-59 from 9% to 13%. Another change in household type is the decrease in the proportion of households containing a child under 16 which has reduced from 42% to 30%. The proportion of households containing one or two persons aged 60 or over has changed little since 1983.

Figure 1: Families with Dependent Children



### Families with dependent children

Figure 1 illustrates the distribution of the different types of families with dependent children. In 2009/10, 72% of families with dependent children in Northern Ireland were headed by a married or cohabiting couple. This proportion has fallen markedly since 1983 when the figure stood at 89%.

Over the same period, the proportion of families with dependent children headed by a lone parent has increased from 11% to 28%. Most of this changing trend is explained by the rise in the percentage of families with dependent children headed by a single lone mother which has increased from 2% to 15%.

# Housing and Accommodation

## Overall Tenure

Since the survey began, housing tenure patterns in Northern Ireland have changed considerably. In 1983, 52% of households owned their home either outright or with a mortgage. Just under half of households (47%) rented their home. In 2009/10, home ownership had increased to 70% while households renting their home had decreased to 29%.

## Home Ownership

Most of the growth in home ownership was due to the increase in households owning their home with a mortgage. From 1983 to 2006/07, this proportion doubled from 20% to 39% of all households. Since then, the proportion of households owning their home with a mortgage has decreased to 34%.

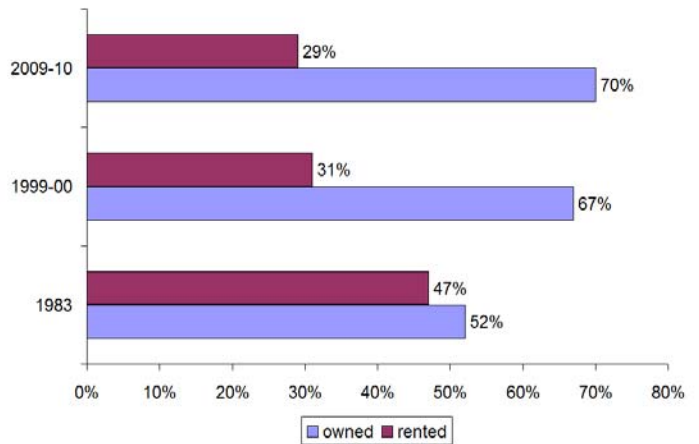
## Renting

In 1983, 39% of households were renting their home from the NIHE. In the most recent year, this figure has decreased to 13%. In contrast, the proportion of households in Northern Ireland that were living in privately rented homes has doubled from 8% to 16% between 1983 and 2009/10.

## Accommodation

The proportion of households living in detached houses has increased from 31% in 1983 to 40% in 2009/10. Over the same period, there has also been an increase in the proportion of households living in semi-detached houses from 20% to 24%. The proportion of households living in terraced houses has decreased from 40% to 28%.

Fig 2: Owned Home versus Rented over time



# Consumer Durables

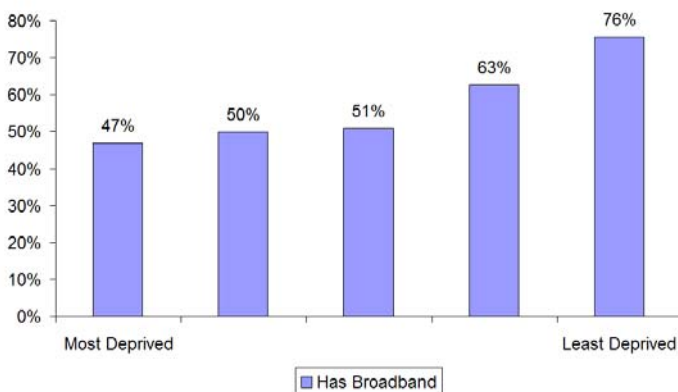
## Home computing and Internet Access

Ownership of home computers and access to the internet continues to grow each year in Northern Ireland. In 2009/10, 67% of households owned a home computer.

Three fifths of Northern Ireland households (59%) accessed the internet via their home computer. A similar proportion of households (57%) had a Broadband Internet Connection.

As might be expected, the proportion of households with broadband access was highest in the least deprived areas. However, approximately one in two households in the most deprived areas reported that they had broadband access.

Fig 3: Broadband Internet Connection by Deprivation Level



## Mobile Phone Ownership

Mobile phone ownership has also increased markedly in the past ten years. In 2009/10, the vast majority of adults in Northern Ireland (89%) owned a mobile phone. This compares to 26% ten years ago.

## Car Ownership

In 2009/10, three quarters of households (77%) owned a car or had access to a car. The proportion of Northern Ireland households owning or having access to more than one car has more than trebled from 11% in 1983 to 35% in 2009/10.

Fig 4: Access to a Car by Deprivation Level

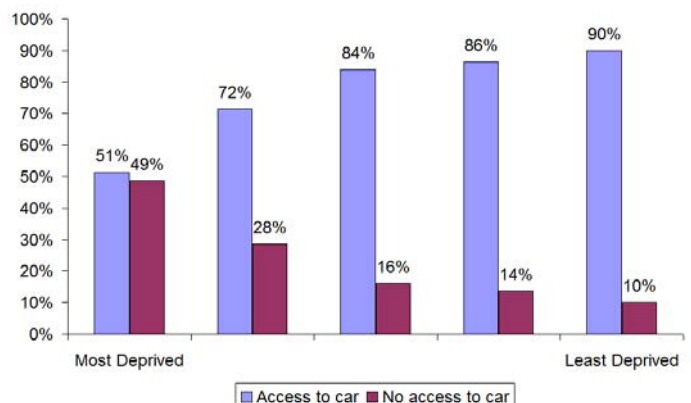


Figure 4 shows that half of households (51%) living in the most deprived areas owned or had access to a car. This compares to 90% of households living in the least deprived areas.

# Health

## Self-reported General Health

The vast majority of adults (84%) reported their health was good or fairly good in the previous 12 months.

## Long-standing Illness

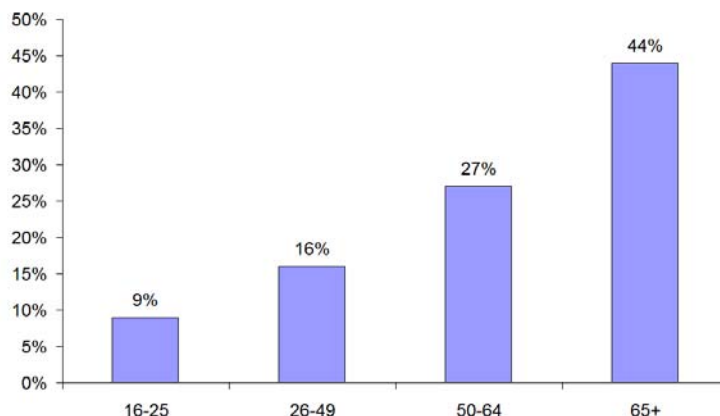
One third of adults (33%) had a long-standing illness; with males and females reporting a similar level (32% and 33% respectively).

## Limiting Long-Standing Illness

One quarter of adults (23%) had a long standing illness which limited their activities.

More than two-fifths (44%) of adults aged 65 and over stated that they had a limiting long standing illness.

Fig 5: Prevalence of Limiting Long-Standing Illness by Age



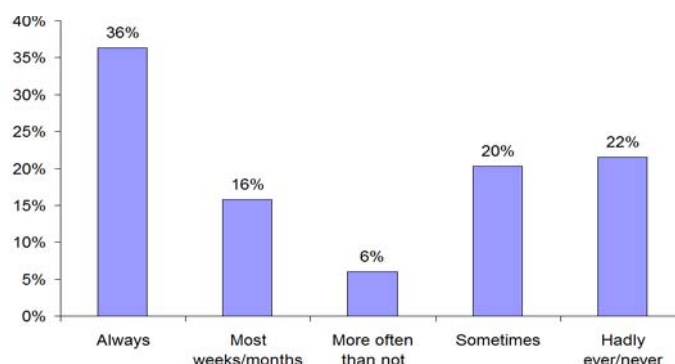
# Finance

## Money left at the end of the week/month

In 2009/10, one fifth of adults (22%) said that they hardly ever or never had money over at the end of the weekly/monthly budget period.

Approximately, one in ten adults (9%) said that they always or most times run out of money before the end of the week or month.

Fig 6: Money left over at the end of the budgeting period



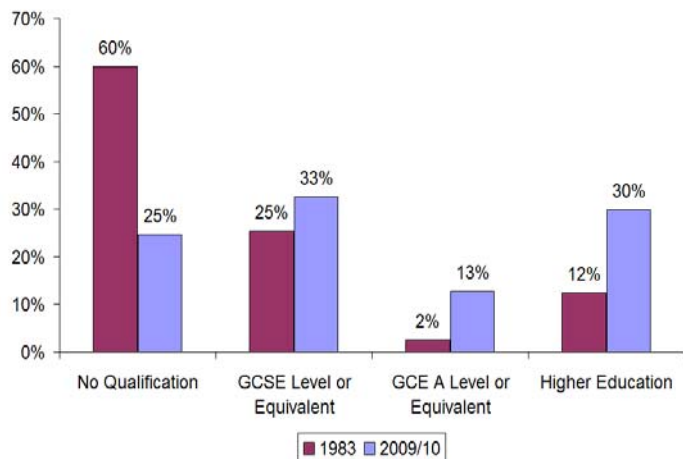
# Educational Attainment

Since the survey began, educational attainment levels have changed considerably.

In 1983, 60% of adults aged 16-69 had left full-time education had no formal qualifications. In 2009/10, this figure had reduced to 25%.

Over the same time period, the proportion of adults with higher education qualifications has more than doubled from 12% to 30%.

Fig 7: Highest Qualification of those aged 16-69 not in full time education (1983 Vs 2009/10)



# Environmental Issues

In 2009/10, 76% of households said that they were very or fairly concerned about the environment, a lower level than reported in the last three years (81%-82%).

Northern Ireland households said that they had taken a range of actions for environmental reasons in the previous 12 months. For example, 64% of households used energy saving light bulbs and almost half of households (44%) said that they had reduced the amount of energy used in the home.

Percentage of Households Who Took Actions Taken to Protect the Environment In Last 12 Months	2009/10
Reduced amount of energy used in home	44%
Reduced amount of water used in home	29%
Used public transport for environmental reasons	18%
Reduced the use of car	20%
Took action to protect wildlife	30%
Recycled paper, glass	31%
Not bought something because of packaging	14%
Bought organic food	20%
Used energy saving light bulbs	64%

## Sport and Leisure

### Satisfaction with Sports Provision

One in two adults (50%) said that they were satisfied with sports provision in Northern Ireland. A further 40% were neither satisfied nor dissatisfied and 10% were dissatisfied.

### Usage of Library Services

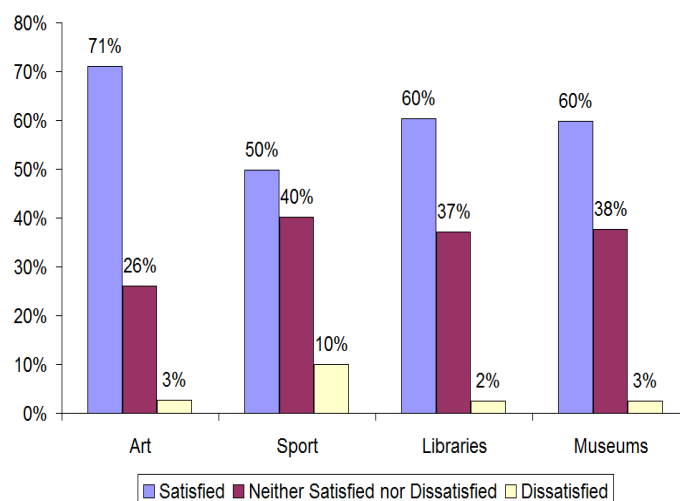
Approximately two thirds of adults (64%) said that they never visit a library. Some 18% of adults visit the library on at least a monthly basis.

### Satisfaction with Libraries

The vast majority of people (90%) who had visited a library in the previous 12 months were satisfied with the service received on their last visit.

Overall satisfaction with library provision in Northern Ireland amongst all adults was 60%. Around 2% of adults were dissatisfied with library provision.

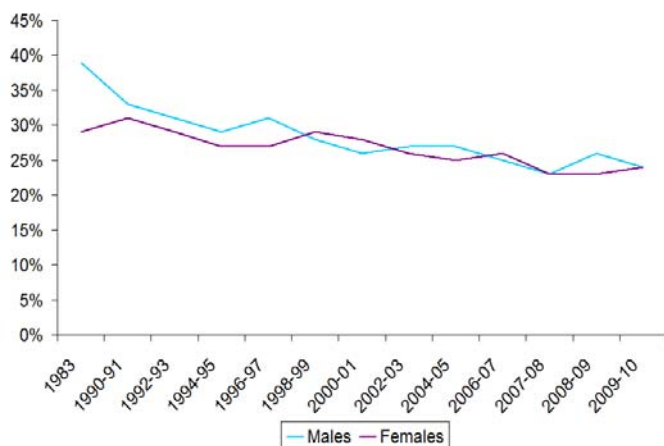
Fig 8: Satisfaction with Provision of Arts, Sports, Libraries and Museums



## Smoking

One quarter of adults (24%) were smokers in 2009/10. This prevalence figure has remained at broadly the same level over the last five years. Prior to this, the prevalence of smoking among adults declined steadily from 33% in 1983.

Fig 9: Smoking Prevalence by Gender

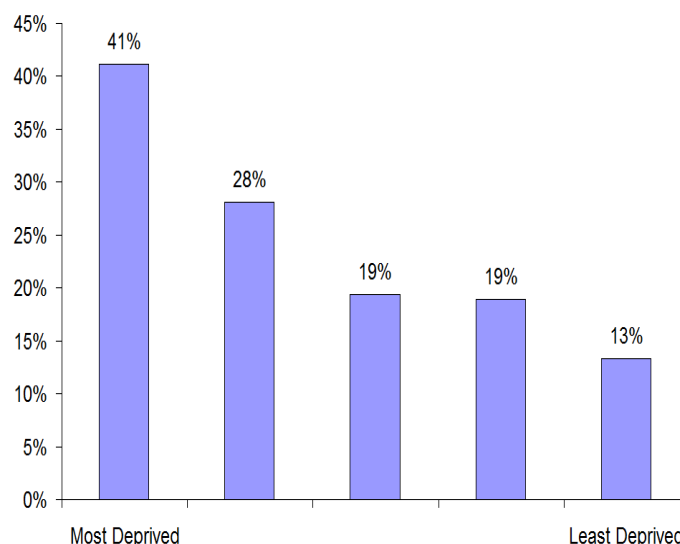


The decline in smoking prevalence has been observed in both adult males and females between 1983 and 2009/10. Over this period, male smoking prevalence decreased from 39% to 24%. Female smoking prevalence has fallen from 29% to 24% over the same time period.

### Smoking Prevalence by Deprivation Level

Figure 10 shows that smoking prevalence was higher in 2009/10 among adults living in the most deprived areas (41%) compared to adults living in the least deprived areas (13%).

Fig 10: Smoking Prevalence by Deprivation Level



For additional copies of this bulletin or for more detailed tables and technical report, please contact

Central Survey Unit  
McAuley House  
2-14 Castle Street  
Belfast BT1 1SY

Tel: (028) 9034 8202  
Fax: (028) 9034 8276

E-mail: [jonathan.harvey@dfpni.gov.uk](mailto:jonathan.harvey@dfpni.gov.uk)

Visit the CSU website

[www.csu.nisra.gov.uk](http://www.csu.nisra.gov.uk)

Additional Trend tables and Update tables are available on the website